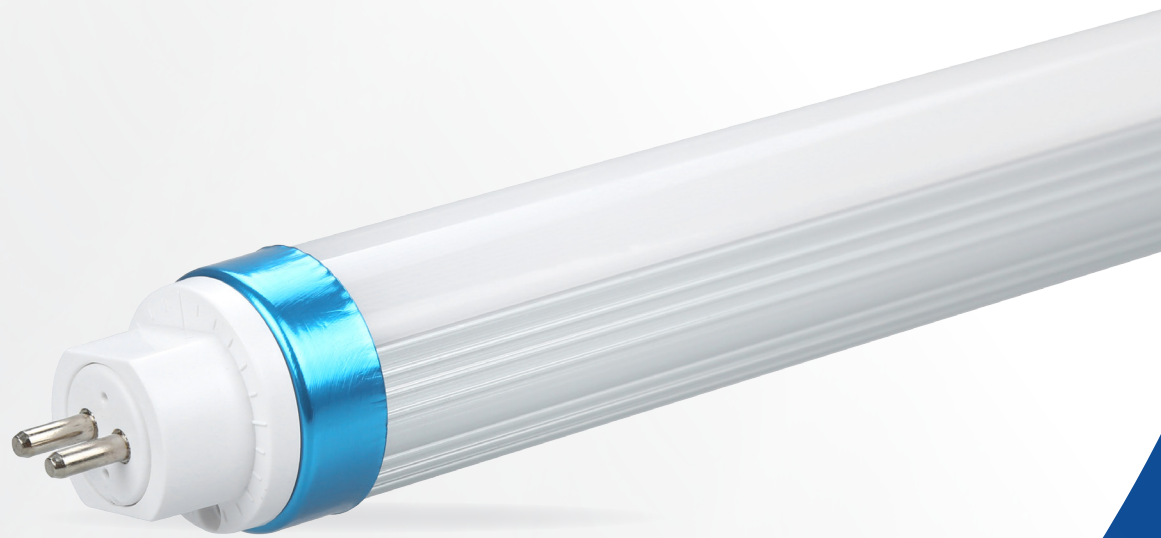


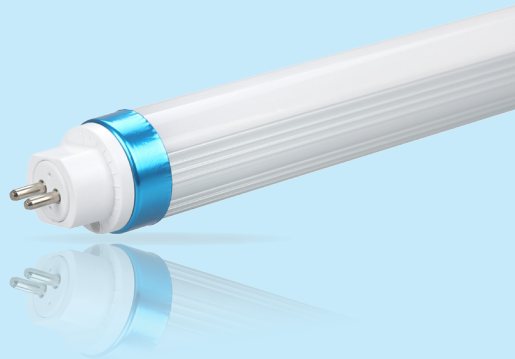


Up-shine[®] Lighting



Technical Application
Guide for UP SHINE
LED Tube Light
UP-T615W1200-A

Introduction



Up-shine high lumen and practical tube T6 adopts complete PC cover, using 2835SMD LED as light source, CRI > 80. V0 fire-rated full PC cover ensures high light transmittance and safe installation. No yellowing and cracking. With Built-in aluminum heatsink, our T6 tubes achieve high lighting performance and good heat dissipation.

- Up to 70% energy saving compared to traditional tube
- Long lifetime of 40,000 hours
- 120° wide beam angle
- 1200mm length
- CCT: 3000K 4000K
5000K 5700K
- No UV/IR light
- Environment friendly, without Mercury or any other hazardous substances

Application notes

- IP20 for indoor use
- Professional electrician for installation only
- Switch off before installation
- Do not touch when in use
- Keep away from hot steam and corrosive gas

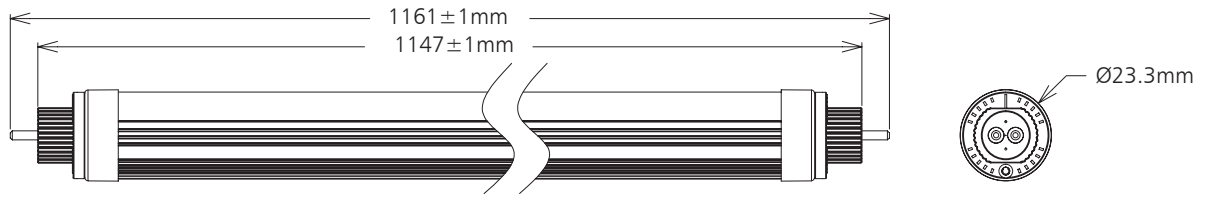
Application Areas

Suitable for commercial and residential applications like offices, supermarkets, shops, schools, hotels, restaurants, workshop, warehouse, homes etc.

Certificates



Product Information



Technical Specifications

Model	Voltage	Power	Power Factor	Lumen (±5%)	Beam angle	CCT	Lifespan	CRI	Dimmable	Dimension
UP-T615W1200-A	AC100-240V	15W	≥0.9	1850	120°	3000K	40000h	≥80	No	Ø23.3*1161mm
UP-T615W1200-A	AC100-240V	15W	≥0.9	1950	120°	4000K	40000h	≥80	No	Ø23.3*1161mm
UP-T615W1200-A	AC100-240V	15W	≥0.9	1980	120°	5000K	40000h	≥80	No	Ø23.3*1161mm
UP-T615W1200-A	AC100-240V	15W	≥0.9	2000	120°	5700K	40000h	≥80	No	Ø23.3*1161mm

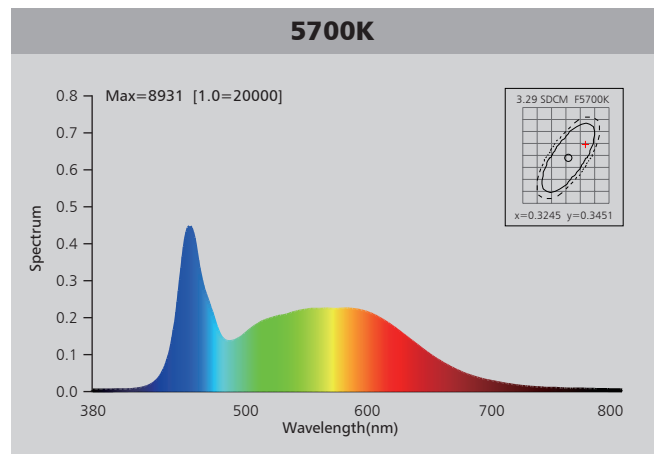
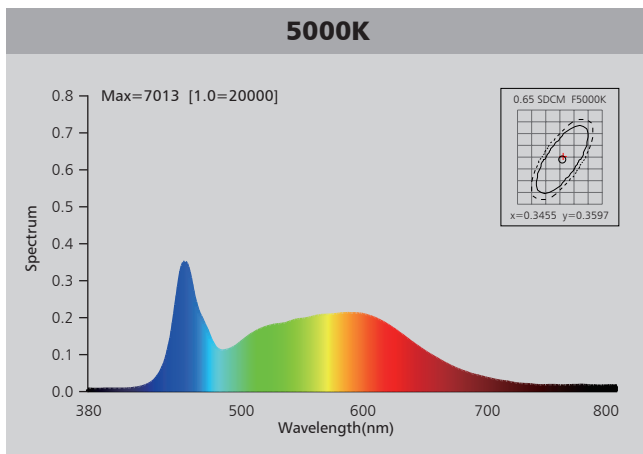
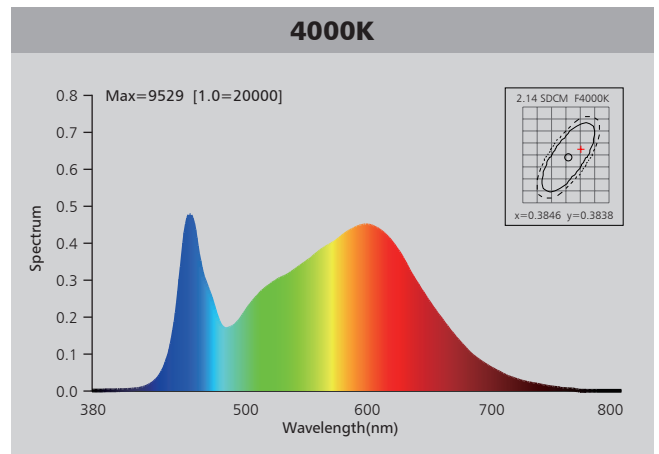
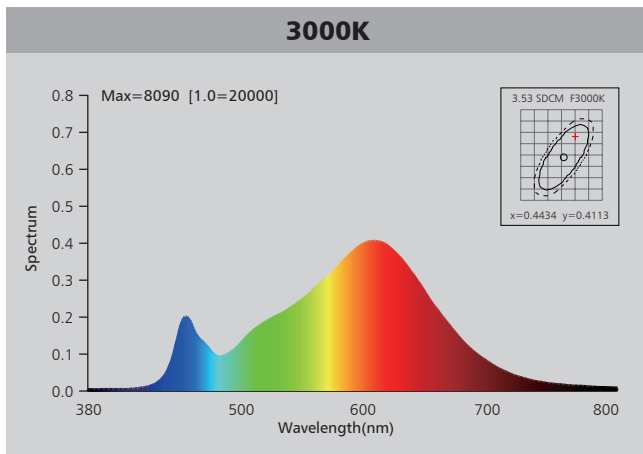
Driver data Sheet

Driver data	Non-dim
Input rated Voltage	AC100-240V
Frequency	50/60HZ
Input Voltage	AC85-265V
Efficiency	≥86%
No load wattage	≤0.5W
Total load Wattage	15W±1W
Power Factor	≥0.9
Rated input current	≤0.2A
Full load output Voltage	DC35-38V
Rated output current	350mA
Output current range	350mA±5%
Power tolerance	±5%
Current output tolerance	±5%
Short circuit protection	PASS
Over temperature protection	PASS
THD	≤20%
Withstand Voltage	AC3000V

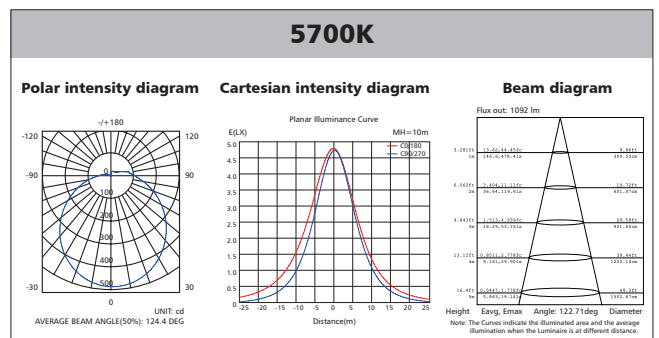
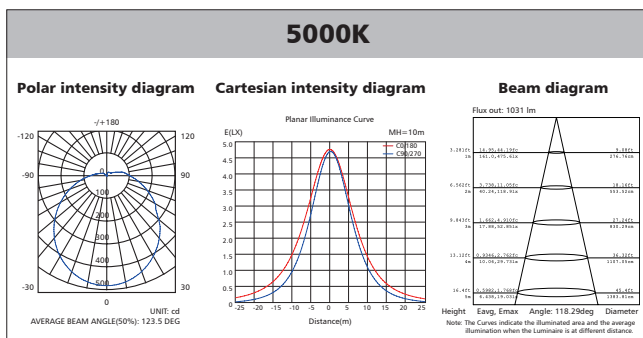
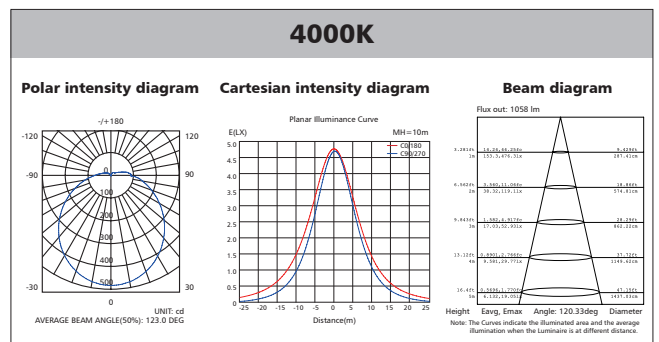
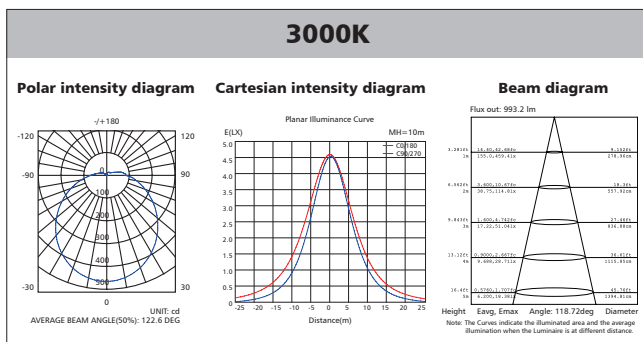
Fixture Compatibility

Rated Wattage	Electrical Classification	Ingress Protection	Operating Temp	Operating Humidity	Storage Temp
15 W	II	IP20	-20°C~45°C	0~90%	-20°C~65°C

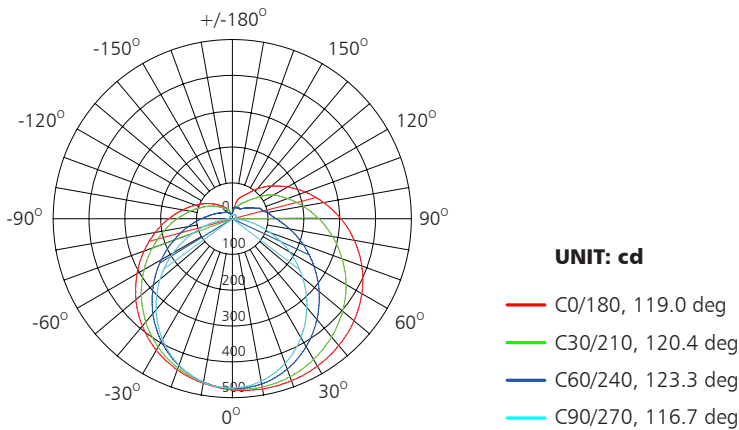
Spectral Distribution



Photometric Diagram



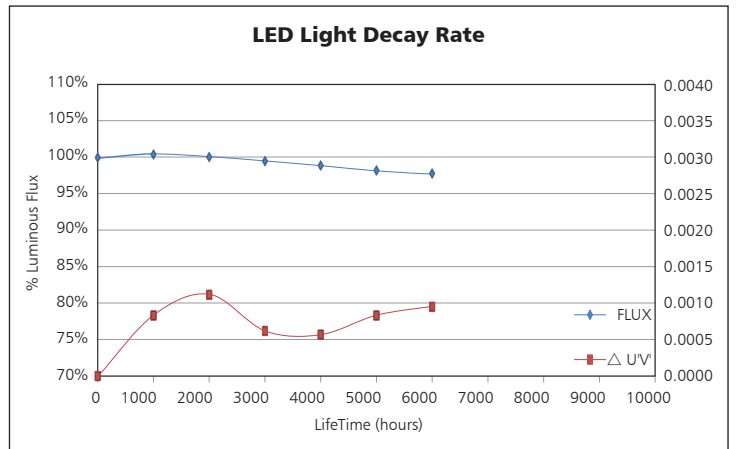
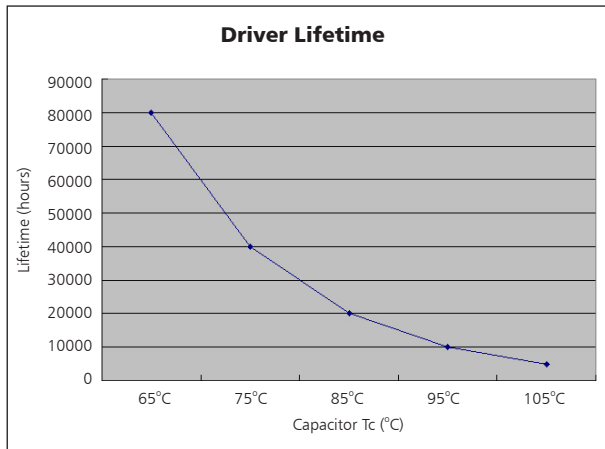
Polar Diagram Comparison



AVERAGE BEAM ANGLE (50%): 124.4DEG

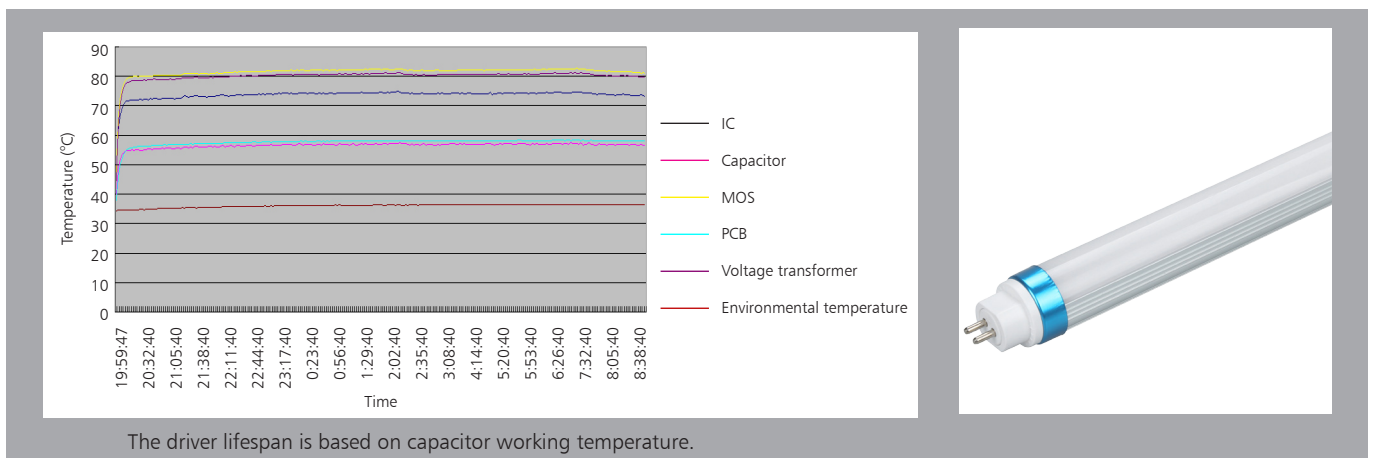


Driver lifetime & LED light decay rate

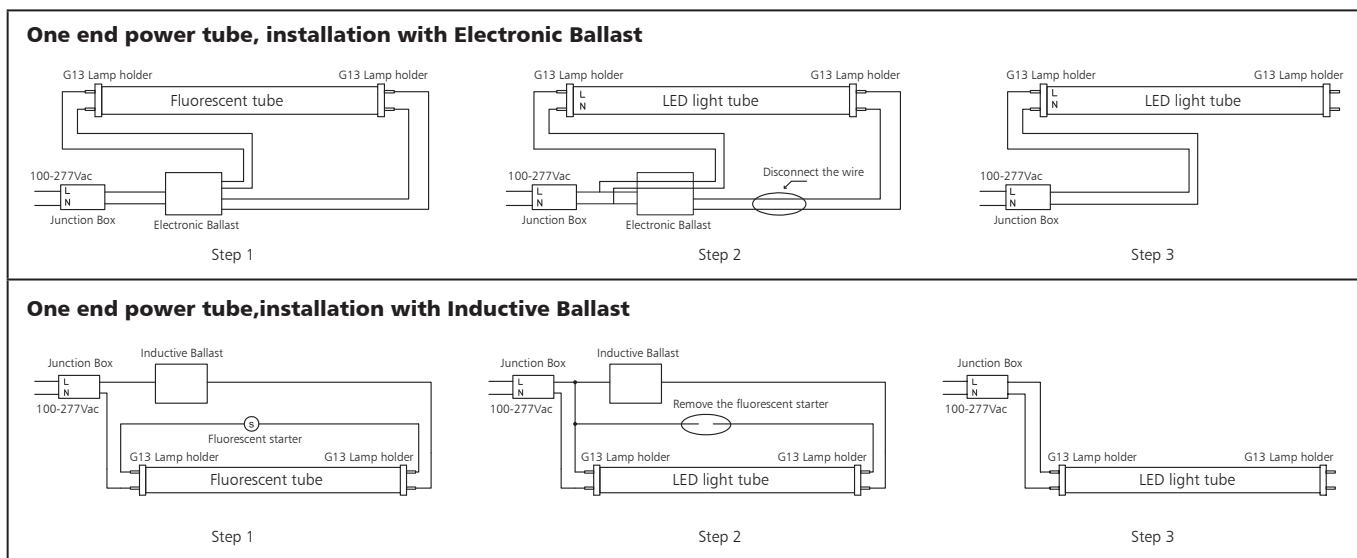


Temperature

- The testing is operated at 25°C
- The lifetime of capacitor, minimum of 5,000 hours if operated at 105°C, will be doubled whenever the temperature drops 10°C
- The highest withstand temperature of IC, MOS could be 120°C
- The highest withstand temperature of LED junction temperature is 150°C



Installation



Packaging Information

	SIZE(CM)	N.W/pc (KGS)	G.W.(KGS)	Q'TY(PCs)
Carton	129*20*21	0.22	12	25

	CTNS	Q'TY(PCs)	VOLUME(CBM)
20" standard container	507	12675	28
40" standard container	1014	25350	56

