



UPSHINE<sup>®</sup>



Technical Application  
Guide for UP-SHINE  
LED Pendant Linear  
UP-DB08-1500-45W-E

# Introduction



The design of batten realizes low cost, simple construction and superior capability, milky PC diffuser achieves anti-glare and high light transmittance. It is made of high lumen 2835SMD led chip, energy saving, instant start, no flickering, no noise & UV/IR radiation, environmental friendly without Mercury or any other hazardous substances. It is a high efficient and low cost product with quite large potential market. Ideal replacement for various applications such as workshop, warehouse, exhibition hall, factory, shop, supermarket etc.

- Aluminum components generate a rust-free product for less maintenance
- Up to 70% energy saving compared to standard CFL
- Environment friendly, without Mercury or any other hazardous substances

## Application notes

- IP20 for indoor use only
- Professional electrician for installation only
- Switch off before installation
- Do not touch when in use
- Keep away from hot steam and corrosive gas

## Application Areas

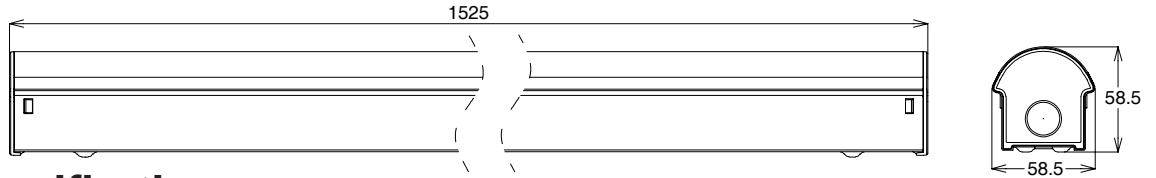
Widely used in office, meeting room, hotel, school etc.

## Certificate

**CE** **RoHS**



# Product Information



## Technical Specifications

Model	Voltage	Power	Power Factor	Lumen (±5%)	Beam angle	CCT	Lifespan	CRI	Dimmable	Dimension
UP-DB08-1500-45W-E	AC230V	45W	≥0.9	4460	120°	3000K	40000h	≥80	No	L1525*W58.5*H58.5mm
UP-DB08-1500-45W-E	AC230V	45W	≥0.9	4860	120°	4000K	40000h	≥80	No	L1525*W58.5*H58.5mm
UP-DB08-1500-45W-E	AC230V	45W	≥0.9	4590	120°	5000K	40000h	≥80	No	L1525*W58.5*H58.5mm
UP-DB08-1500-45W-E	AC230V	45W	≥0.9	4500	120°	5700K	40000h	≥80	No	L1525*W58.5*H58.5mm

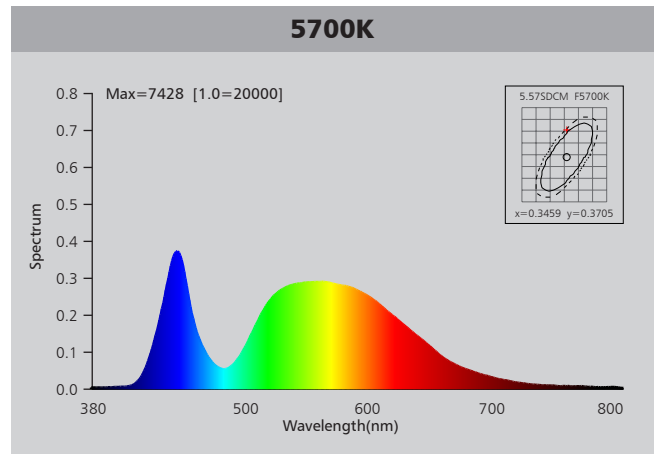
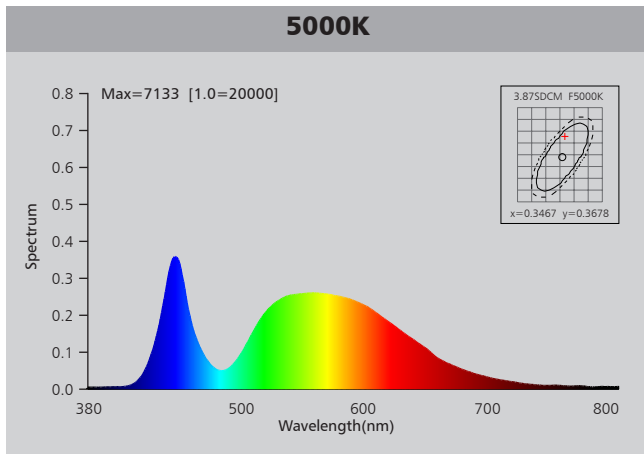
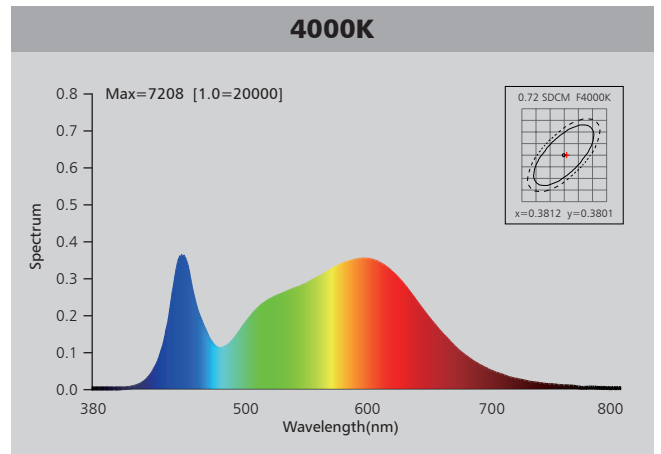
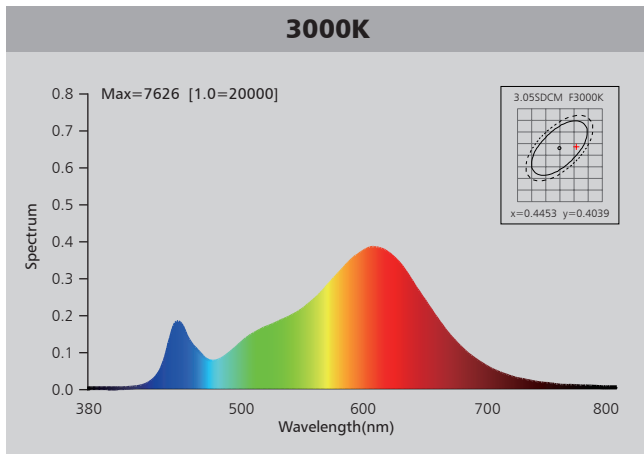
## Driver data Sheet

Driver data	Emergency	Main Power
Input rated Voltage	AC230V	AC230V
Frequency	50Hz	50Hz
Input Voltage	AC200-240V	AC200-240V
Efficiency	≥78%	≥85%
No load wattage	—	≤0.5W
Total load Wattage	4W	45W±5%
Power Factor	—	≥0.9
Rated input current	≤0.04A	≤0.23A
Full load output Voltage	DC25-68V	60-75V
Rated output current	50-230mA	620mA
Output current range	—	620mA±5%
Power tolerance	—	±5%
Current output tolerance	—	±5%
Battery	7.4V 2200mAh	—
Lifetime	30000hrs(battery changeable)	—
Battery duration	≥ 3hrs	—
Charge Period	≥ 24hrs	—
Emergency switching time	≅ 1S	—
Short circuit protection	PASS	PASS
Over voltage protection	—	PASS
Over temperature protection	—	—
THD	—	<18%
Withstand voltage	AC1500V	AC1500V

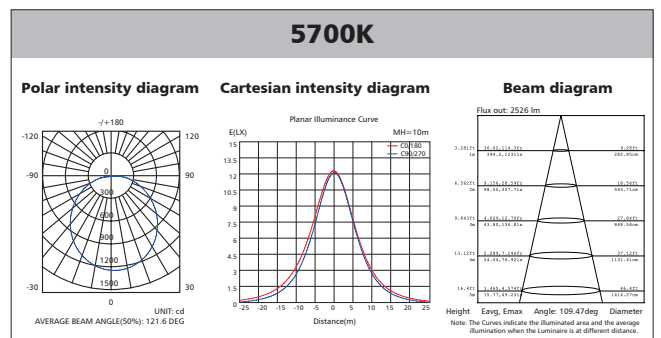
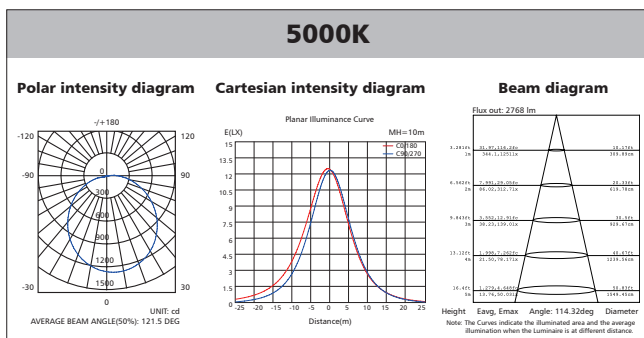
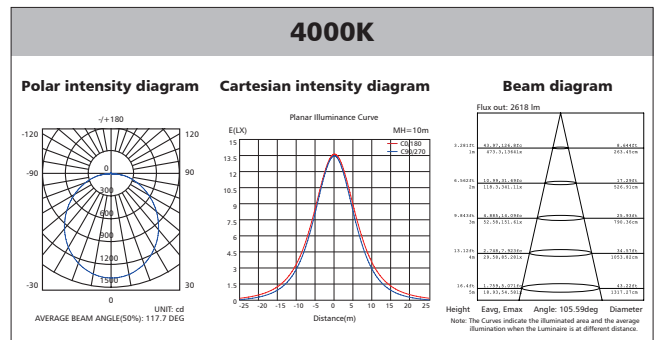
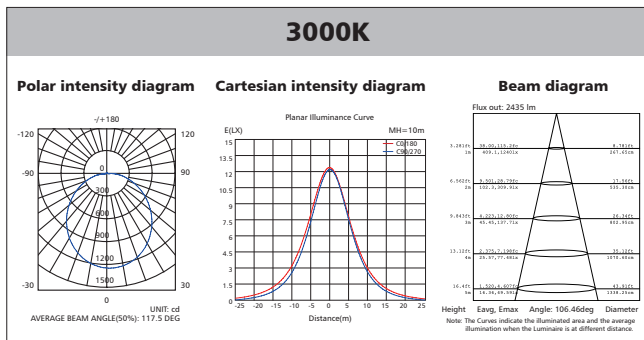
## Fixture Compatibility

Rated Wattage	Electrical Classification	Ingress Protection	Operating Temp	Operating Humidity	Storage Temp
45W	I	IP20	-20°C~45°C	0~90%	-20°C~65°C

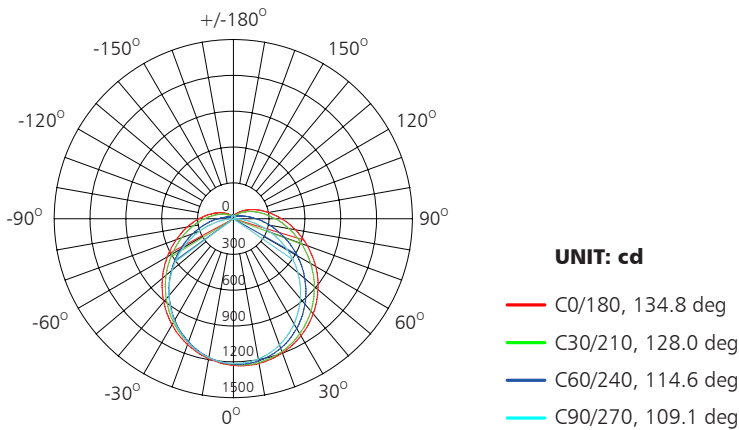
# Spectral Distribution



# Photometric Diagram



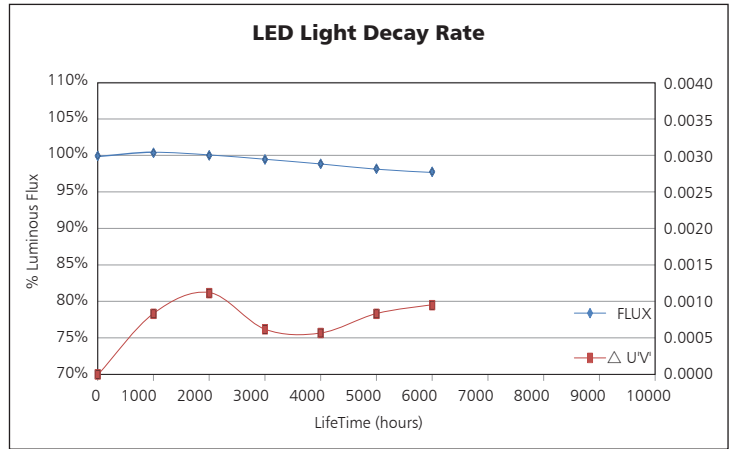
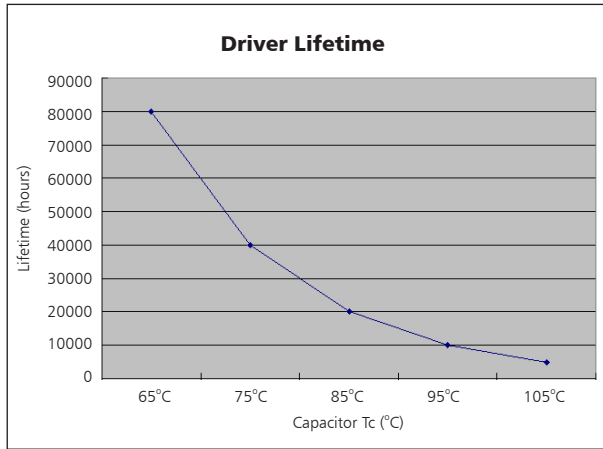
# Polar Diagram Comparison



AVERAGE BEAM ANGLE (50%): 121.6DEG

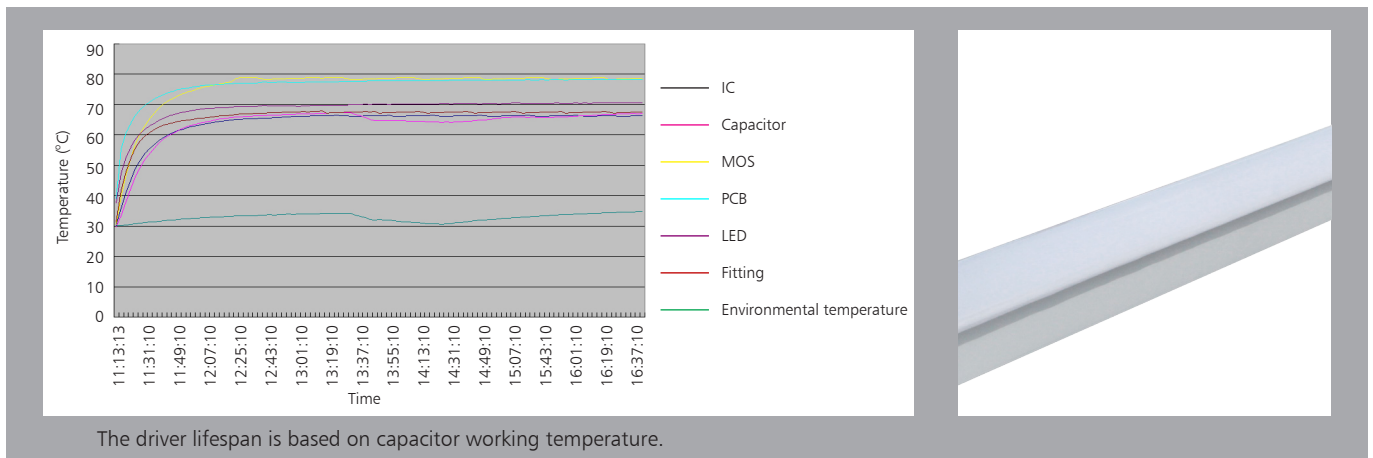


# Driver lifetime & LED light decay rate



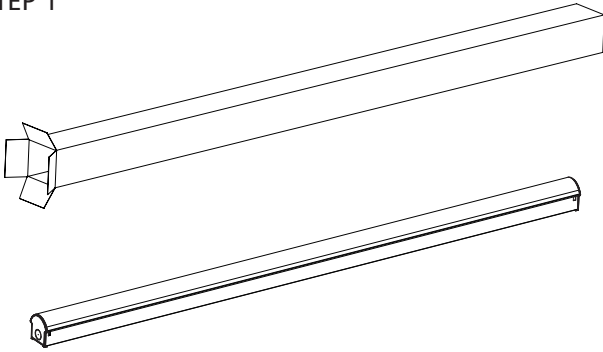
# Temperature

- The testing is operated at 25°C
- The lifetime of capacitor, minimum of 5,000 hours if operated at 105°C, will be doubled whenever the temperature drops 10°C
- The highest withstand temperature of IC, MOS could be 120°C
- The highest withstand temperature of LED junction temperature is 150°C

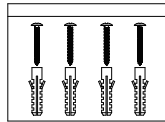


# Installation 1

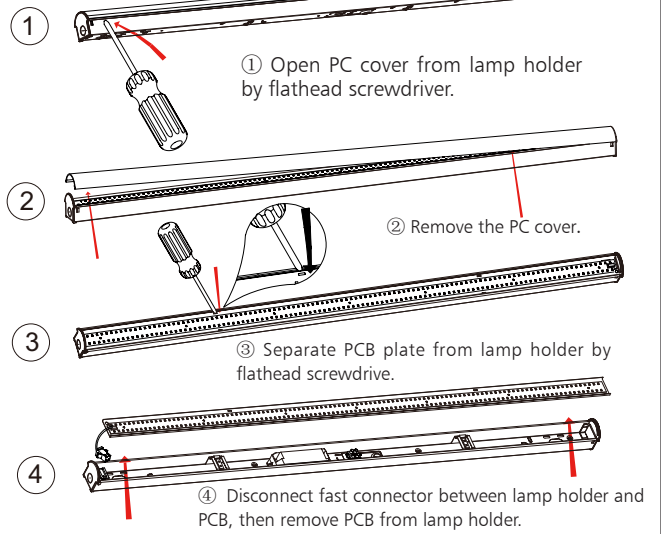
## STEP 1



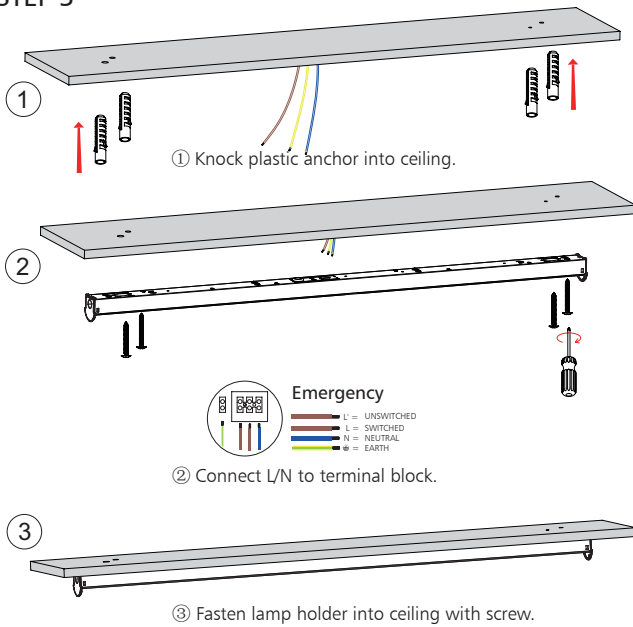
Open the packing and take out the lamp



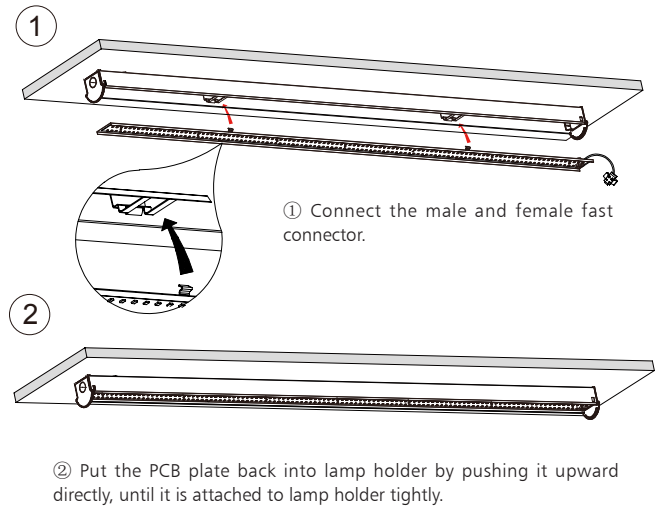
## STEP 2



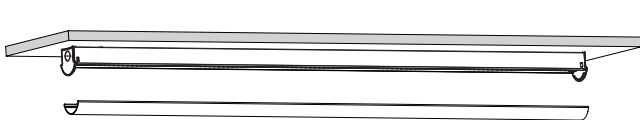
## STEP 3



## STEP 4

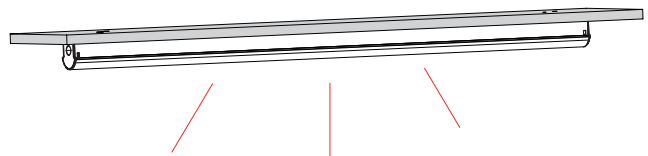


## STEP 5

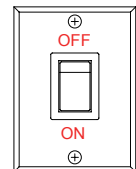


Pushing PC cover back to lamp holder by hands, until it is firmly fixed.

## STEP 6

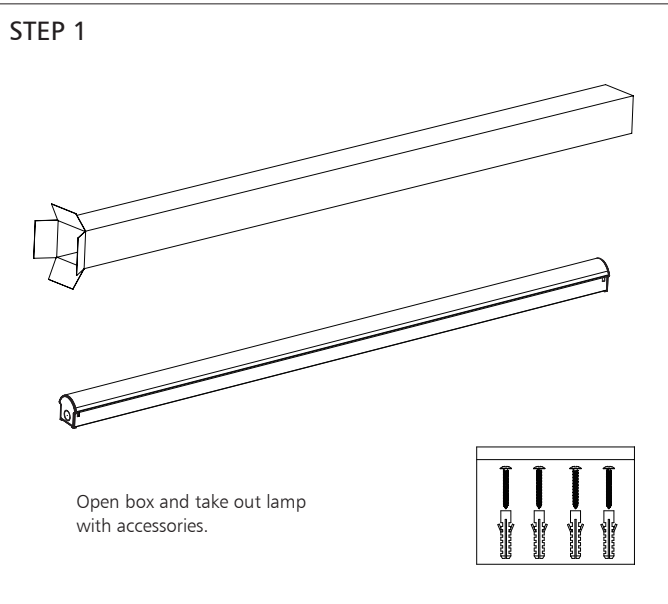


Restore mains power and switch on for correct operation.



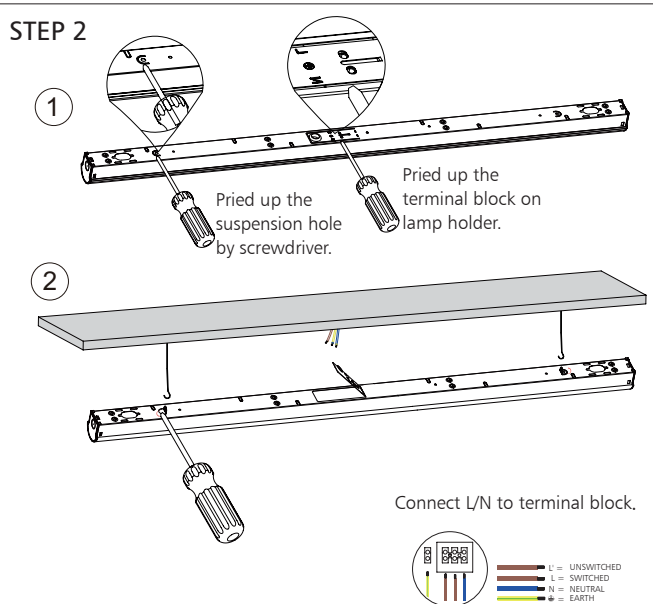
## Installation 2

**STEP 1**



Open box and take out lamp with accessories.

**STEP 2**



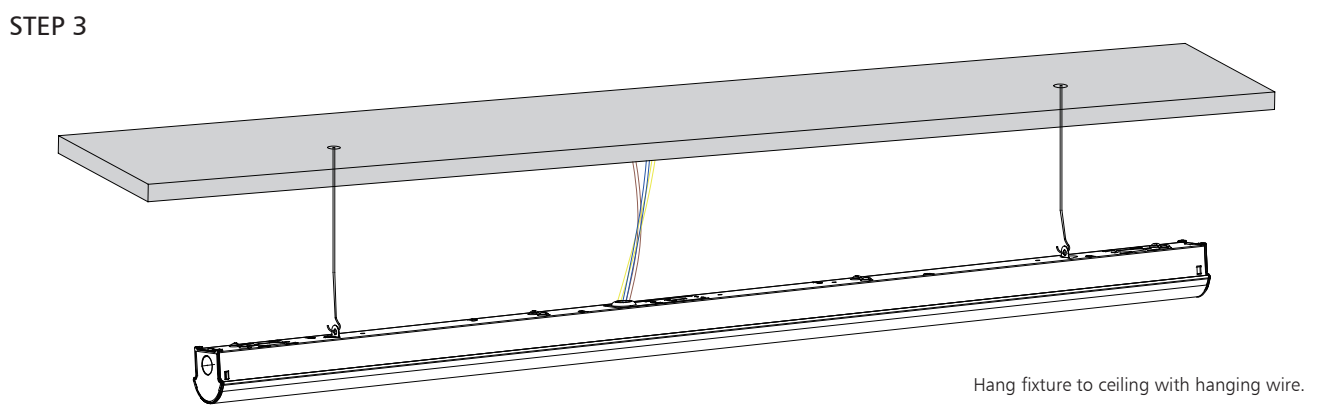
① Pried up the suspension hole by screwdriver.

② Pried up the terminal block on lamp holder.

Connect L/N to terminal block.

Legend:  
 L = UNSWITCHED  
 L = SWITCHED  
 N = NEUTRAL  
 E = EARTH

**STEP 3**



Hang fixture to ceiling with hanging wire.

## Packaging Information

	SIZE(CM)	N.W/pc (KGS)	G.W.(KGS)	Q'TY(PCS)
Carton	159.5*21.5*15.5	2.18	16.8	6

	CTNS	Q'TY(PCS)	VOLUME(CBM)
20" standard container	517	3102	28
40" standard container	1034	6204	56

