

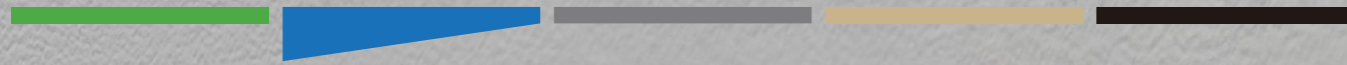
Entry /ECO

Standard /STD

Professional/PRO

ODM & OEM

Intelligent/INT



LED Wall Light
WL102 Series





Introduction

WL102 is an up&down lighting design indoor wall lamp. It has a flowerpot shape and looks smooth and compact, suitable for lighting decoration. ADC12 aluminum housing offers great thermal management. Up&down lighting has 120degree wide beam angle, which is greatly increased decorative effect.

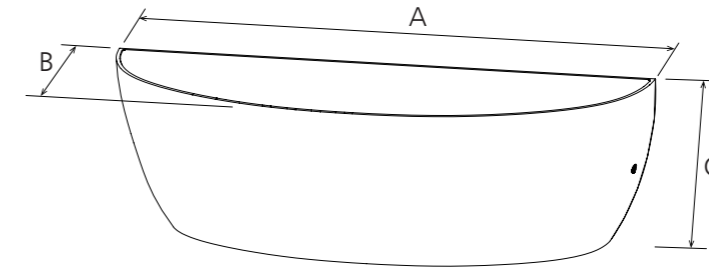
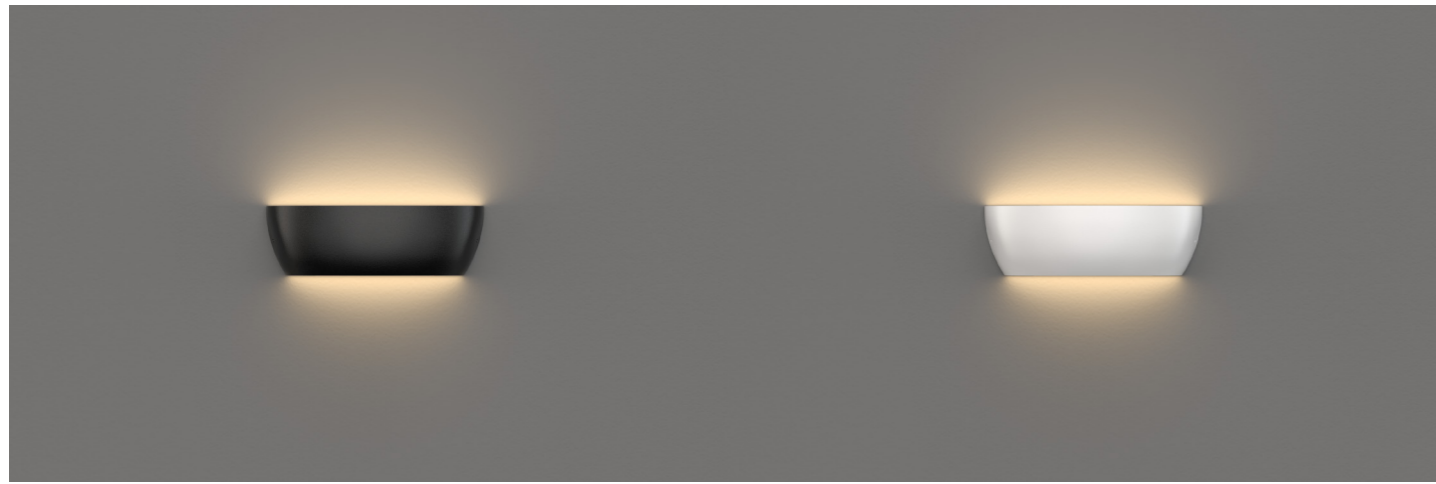
Features

1. Smoothly surface with flowerpot shape.
2. Up&down lighting has 120degree wide beam angle.
3. Interchangeable CCT(3000K+4000K+5700K)with slide switch.
4. Internal flicker free driver.
5. Dimming ways: Non-dim, triac dim.
6. Quick installation.

Application Areas

It's widely used in indoor corridor, study room, bedroom,lobby etc.





Technical Data Sheet

Code No.	WL102-8W		
Dimension(mm)	242*67*77		
Cutout (mm)	-		
Watt(W)	4.8W(Indirect)+3.2W(Direct)		
Rated Input Voltage(V)	AC230V		
Input Voltage(V)	AC200-240V		
LED Module Input	-		
Light Source	SMD		
SDCM	<6		
CCT(K)	1-CCT: 3000K/4000K/5000K/5700K 3-CCT: 3000K + 4000K + 5700K		
CCT Selection DIP Switch	Yes		
Luminous Flux (lm) ±5%	Non-DIM	1-CCT	700-750
			DIM
	Non-DIM	3-CCT	720-770
			DIM
CRI	80		
Beam Angle (°)	Up&Down120°		
UGR	-		
LED Driver	Built-in		
Dimming Option	Triac		
Sensor	NO		
Emergency Kits	NO		
Electrical Class	Class I		
Ingress Protection (IP Rating)	IP20		
Impact Resistance (IK Rating)	IK06		
Product Finishing(Base)	White		
Optics Material	PC		
Housing Material	Aluminium+PC		
Lifetime (hr)	50,000h		
Glow wire test (°C)	850°C		
Operating Temp. (°C)	-20°C ~45°C		
Storage Temp. (°C)	-20°C ~65°C		
Installation	wall mount		

Measurement

Code	Dimension(mm)			Size(mm)	Product Weight (Kg)		Package weight (Kg)		Carton Size(cm)	Qty/CTN	20GP (pcs)	40HQ (pcs)
	A	B	C		N.W/PC	G.W/PC	N.W/CTN	G.W/CTN				
WL102	242	67	77	242*67*77	0.6	0.7	14.5	18	54.5*35*27	24	13488	31296

Driver Datasheet(Non-dimmable)

Total load wattage		8W
Output	Output Voltage range	DC60-75V
	Rated output current	105mA
	Line Regulation	±5%
	Setup, Rise Time	≤0.5S
	Flickering Index	≤3%(NO RISK)
Input	Input Voltage	AC85-265V
	Rated Input Voltage(V)	AC100-240V
	Frequency	50Hz
	Input Current	≤0.1A
	Rated Input Current	≤0.09A
	Power Factor	0.9
	THD	-
	Efficiency	≥85%
Protection	No load wattage	≤0.5W
	Short circuit protection	Pass
	Over voltage protection	Pass
Safety & EMC	Over temperature protection	Pass
	Withstand voltage	-
	Isolation Resistance	-
	Surge	IEC/EN61000-4-5(P<25W; L-N:500V, L/N-PE:1KV)
	EMC Emission	IEC/EN55015, IEC/EN61000-3-2
EMC Immunity	IEC/EN61000-4-2,3,4,5,6,8,11;IEC/ EN61547	

Driver Datasheet (Triac Dimmable)

Total load wattage		8W
Output	Output Voltage range	DC65-75V
	Rated output current	95mA
	Line Regulation	±5%
	Setup, Rise Time	≤0.5S
	Flickering Index	≤3%(NO RISK)
Input	Input Voltage	AC200-264V
	Rated Input Voltage(V)	AC200-240V
	Frequency	50Hz
	Input Current	≤0.05A
	Rated Input Current	≤0.05A
	Power Factor	0.88
	THD	-
	Efficiency	≥85%
	No load wattage	≤0.5W
	Short circuit protection	Pass
Protection	Over voltage protection	Pass
	Over temperature protection	Pass
	Withstand voltage	-
Safety & EMC	Isolation Resistance	-
	Surge	IEC/EN61000-4-5(P<25W; L-N:500V, L/N-PE:1KV)
	EMC Emission	IEC/EN55015, IEC/EN61000-3-2
	EMC Immunity	IEC/EN61000-4-2,3,4,5,6,8,11;IEC/ EN61547

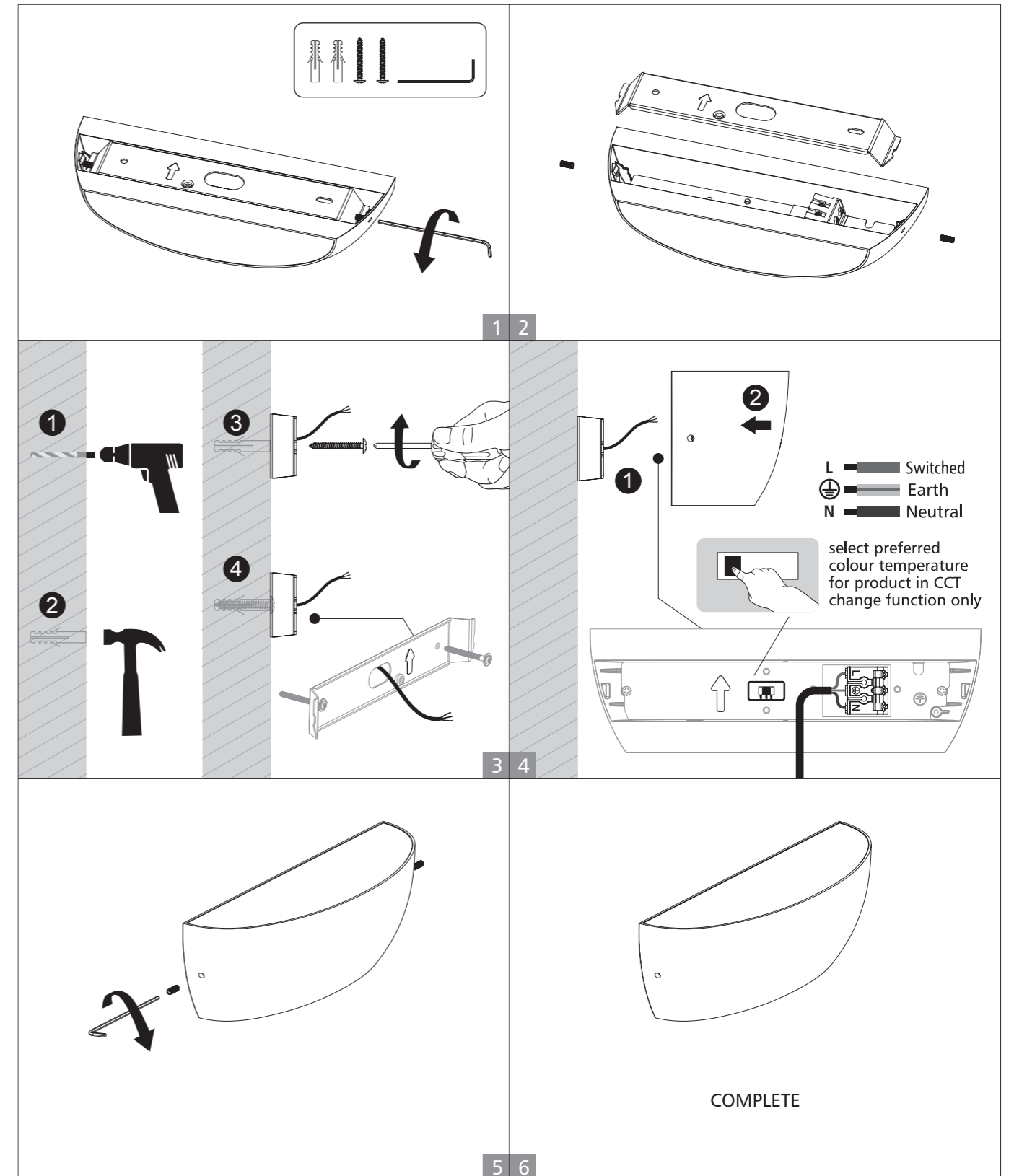
Installation Instruction

WARNING ⚡

1. Switch off before installation.
2. Switch on only after complete installation and examination of the circuit.
3. Professional electrician for installation and maintenance only.



Wall mounted installation



ECO
Specifications

STD
Specifications

PRO
Specifications

ODM
Specifications


INT
Intelligent

UPSHINE | *Up to Shine, there is life*
光之上，是生活

▼ www.upshine.com info@upshine.com TEL: +86 755 2919 7332 ▼

Add: 2nd building Dingfeng High-Tech Zone, Fuyuan 1st road, Fu Yong Sub-district, Bao'an, Shenzhen China