

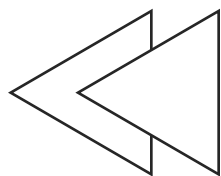
A perspective view of a subway tunnel. The floor is covered in a metal grate. The walls are made of reflective metal panels. The ceiling has several long, rectangular light fixtures. The text "Subway LED Lighting Case" is overlaid in the center, with a blue glow effect. Below it, the website "www.upshine.com" is also overlaid in a similar style.

Subway LED Lighting Case

www.upshine.com

CONTENTS

- Case Show
- Product Introduced
- Installation Notes



PART ONE

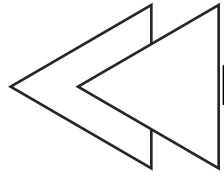
Case Show

Subway lighting fixtures features fashionable design and elegant workmanship. it received great popularity by the excellent dimming effect.

Reducing costs and lasting shiny can keep whole subway space more suitable



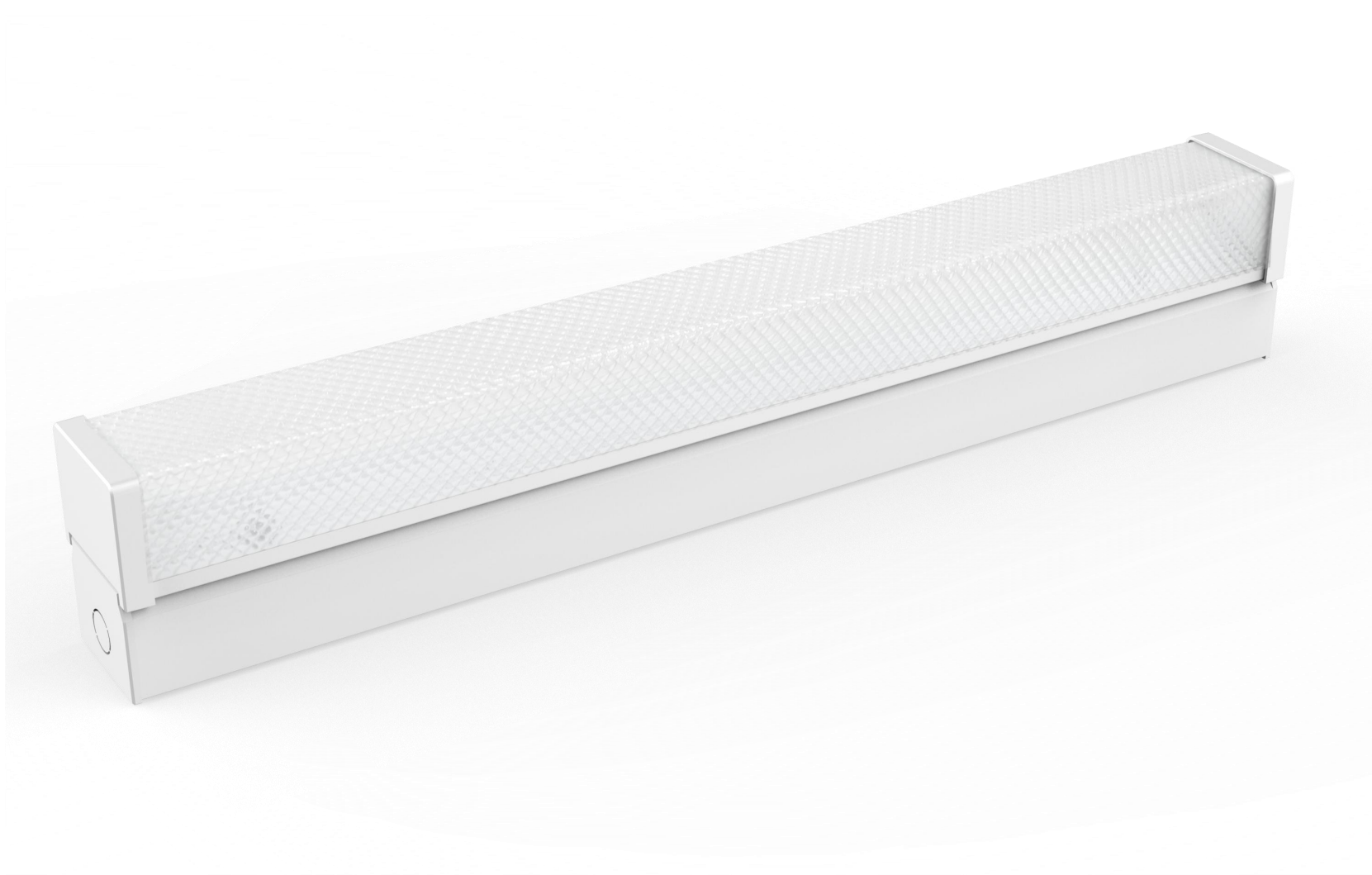




PART TWO

Product Introduced

UPSHINE AL06 LED Batten Light



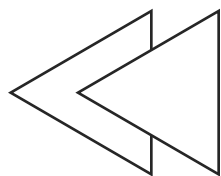




T8 diffused batten suitable for ceilings, walls or pendant mounting. PS prismatic diffuser for visual comfort.

Cover plate held securely by threaded nut for fast installation. High quality white epoxy powder coated finish.

Large terminal block for ease in installation

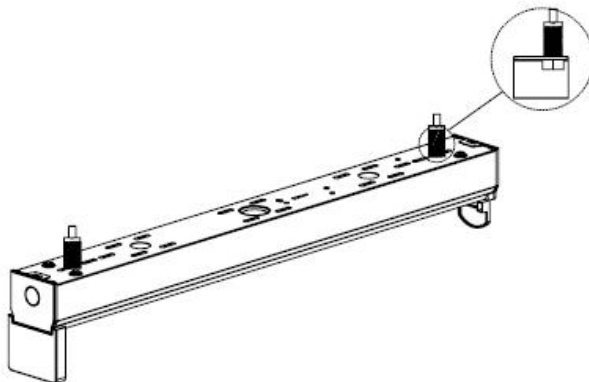


PART Three

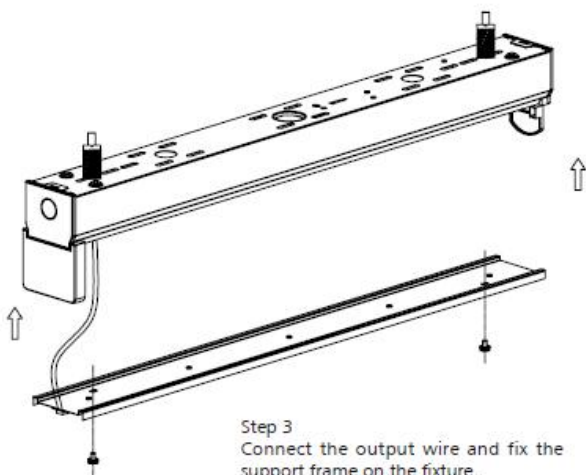
Installation Notes



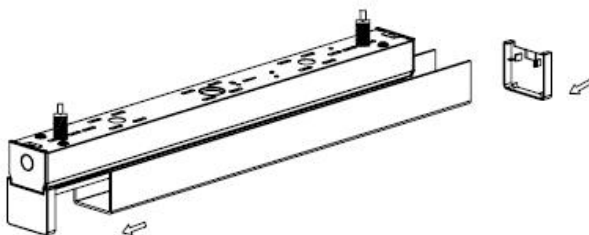
Step 1
Fix the ceiling accessories on the ceiling.



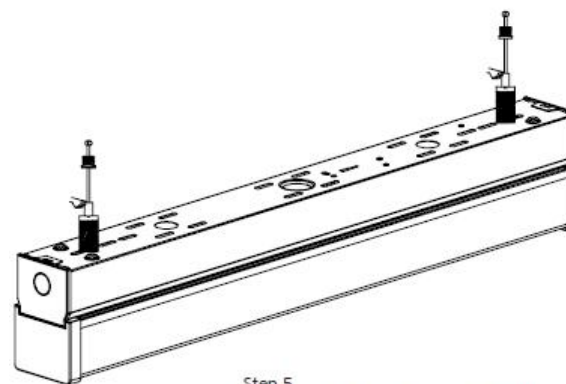
Step 2
Fix the locking device on the fixture.



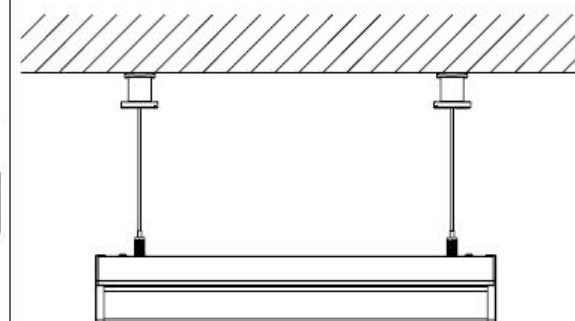
Step 3
Connect the output wire and fix the support frame on the fixture.



Step 4
Slip the lampshade into the slot and close the other side.



Step 5
Press the locking device and insert the wire rope into the locking device.



Step 6
The installation is finished.

AL06 LED Batten with Easy Install



THANK!

WWW.UPSHINE.COM