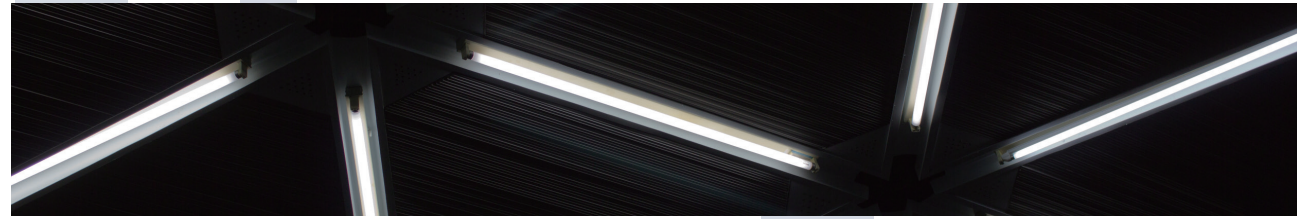


2016-II UP-SHINE LED TUBE LIGHT & LED BATTEN SERIES



Up-shine Lighting Co., Limited

地址：广东省深圳市宝安区福永街道福园一路鼎丰高新产业园 2 栋

2nd building Dingfeng High-Tech Zone, Fuyuan 1st road,

Fuyong Sub-district, Bao'an, Shenzhen China

Tel: +86-755-29197332

Fax: +86-755-29197301

E-mail: info@upshine.com

Web: www.upshine.com

Zip code: 518103





COMPANY PROFILE



Founded in 2007, as a leading LED indoor lighting manufacturer, Up-shine has built a good reputation at home and abroad with top quality products, advanced lighting solution and cheerful after-sales service.

Up-shine devotes itself in researching, developing and manufacturing a full range of lighting products with most cost-effective solution. We've committed to improving ourselves paying more attention to customer demand, focusing on making people's life more safe and comfortable, enabling them to enjoy new technology and efficient use of resources.

Covers an area of 15000 square meters, equipped with over 500 front-line employees and 56 qualified engineers, Up-shine is growing up very fast as a medium sized enterprise. 36 outstanding staff serve quality department, forming a high level quality system, which provides us a favorable pullulating environment.

With clear marketing orientation, sustained technical innovation and internationally -updated management philosophy, Up-shine must be a great choice as your reliable long-term partner, you can count on us to provide all possible lighting service.

AL+PC T8 Tube

600mm / 1200mm / 1500mm



Technical Specifications

Voltage: AC100-240V
 Power: 10W / 18W / 20W / 25W
 Power Factor: ≥0.9
 Beam angle: 120°
 CCT: 3000K 4000K 5000K 5700K

Lifespan: 40000hrs
 CRI: ≥80
 IP: 20
 Dimmable: No
 Diffuser: Clear / Opal

Model	Non-DIM Lumen (±5%)			
	3000K	4000K	5000K	5700K
UP-T810W600	1000	1020	1035	1050
UP-T818W1200	1800	1840	1870	1880
UP-T820W1200	2040	2050	2080	2100
UP-T825W1500	2510	2575	2600	2620

T8 Diffused Batten

600mm / 1200mm / 1500mm



AL06-A



AL06-B



AL06-C



Technical Specifications

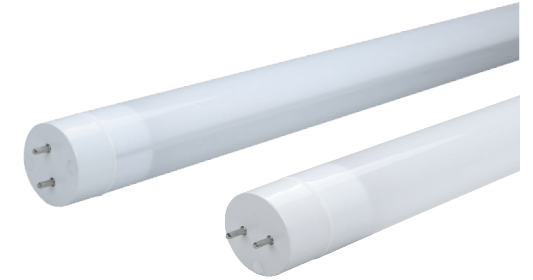
Voltage: AC100-277V
 Power: 9W / 18W / 25W / 36W / 50W
 Power Factor: ≥0.9
 Beam angle: 120°
 CCT: 3000K 4000K 5000K 5700K

Lifespan: 40000hrs
 CRI: ≥80
 IP: 20
 Dimmable: No
 Surface color: White

Model	Non-DIM Lumen (±5%)			
	3000K	4000K	5000K	5700K
UP-AL06-9W-A	750	770	800	780
UP-AL06-18W-A	1550	1600	1630	1610
UP-AL06-25W-A	2050	2100	2120	2100
UP-AL06-18W-B	1530	1570	1630	1580
UP-AL06-36W-B	3060	3170	3250	3180
UP-AL06-50W-B	4150	4250	4300	4250
UP-AL06-18W-C	1530	1570	1630	1580
UP-AL06-36W-C	3060	3170	3250	3180
UP-AL06-50W-C	4150	4250	4300	4250

Waterproof Tube Light

600mm / 1200mm



Technical Specifications

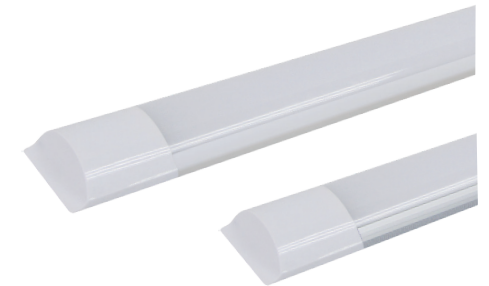
Voltage: AC100-240V
 Power: 10W / 12W / 20W / 24W
 Power Factor: ≥0.9
 Beam angle: 360° / 240°
 CCT: 3000K 4000K 5000K 5700K

Lifespan: 40000hrs
 CRI: ≥80
 IP: 65
 Dimmable: No
 Diffuser: Opal

Model	Non-DIM Lumen (±5%)			
	3000K	4000K	5000K	5700K
UP-T1010W600-K	1010	1170	1170	1160
UP-T1020W1200-K	2140	2245	2235	2205
UP-T1012W600-R	1080	1250	1220	1160
UP-T1024W1200-R	2445	2560	2545	2496

Super Slim LED Batten

600mm / 900mm / 1200mm



Technical Specifications

Voltage: AC100-240V
 Power: 21W / 32W / 42W
 Power Factor: ≥0.9
 Beam angle: 110°
 CCT: 3000K 4000K 5000K 5700K

Lifespan: 40000hrs
 CRI: ≥80
 IP: 20 / 65
 Dimmable: No
 Diffuser: Clear / Opal

Model	Non-DIM Lumen (±5%)			
	3000K	4000K	5000K	5700K
UP-AL17-21W	1850	1870	1950	1890
UP-AL17-32W	2705	2720	2850	2820
UP-AL17-42W	3730	3740	3820	3740
UP-AL17F-21W	1650	1680	1760	1700
UP-AL17F-42W	3490	3480	3570	3530

Super Slim LED Batten

600mm / 900mm / 1200mm

RoHS



Technical Specifications

Voltage: AC100-277V
 Power: 21W / 32W / 42W
 Power Factor: ≥0.9
 Beam angle: 110°
 CCT: 3000K 4000K 5000K 5700K

Lifespan: 40000hrs
 CRI: ≥80
 IP: 20
 Dimmable: No
 Diffuser: Opal

Model	Non-DIM Lumen (±5%)			
	3000K	4000K	5000K	5700K
UP-DB01-21W	1830	1870	1850	1790
UP-DB01-32W	2820	2910	2880	2720
UP-DB01-42W	3530	3610	3570	3650

Super Slim LED Batten

600mm / 900mm / 1200mm



Technical Specifications

Voltage: AC200-240V
 Power: 20W / 30W / 40W
 Power Factor: ≥0.9
 Beam angle: 120°
 CCT: 3000K 4000K 5000K 5700K

Lifespan: 40000hrs
 CRI: ≥80
 IP: 20
 Dimmable: Triac dimmable
 Diffuser: Opal

Model	Non-DIM Lumen (±5%)				DIM Lumen (±5%)			
	3000K	4000K	5000K	5700K	3000K	4000K	5000K	5700K
UP-BD05-20W	1600	1690	1710	1680	1520	1610	1625	1600
UP-BD05-30W	2600	2630	2610	2650	2450	2490	2480	2430
UP-BD05-40W	3450	3540	3420	3500	3240	3360	3250	3330

Double Side Emitting LED Batten

600mm / 900mm / 1200mm



Light Effect

Up 40%



Down 60%



Technical Specifications

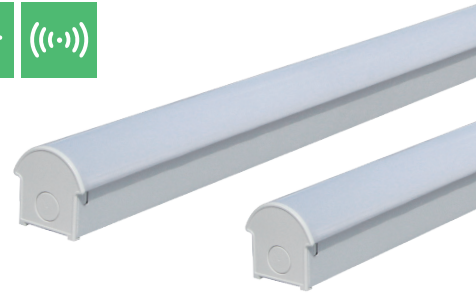
Voltage: AC100-277V
 Power: 20W / 30W / 40W
 Power Factor: ≥0.9
 Beam angle: 270°
 CCT: 3000K 4000K 5000K 5700K

Lifespan: 40000hrs
 CRI: ≥80
 IP: 40
 Dimmable: Triac dimmable
 Diffuser: Opal

Model	Non-DIM Lumen (±5%)				DIM Lumen (±5%)			
	3000K	4000K	5000K	5700K	3000K	4000K	5000K	5700K
UP-DB15-0.6-20W	1380	1540	1440	1480	1340	1480	1380	1440
UP-DB15-0.9-30W	2010	2400	2190	2280	1980	2310	2130	2220
UP-DB15-1.2-45W	2970	3460	3190	3100	2830	3370	3100	3060

LED Batten

600mm / 1200mm / 1500mm



Technical Specifications

Voltage: AC100-277V / AC200-240V
 Power: 20W / 40W / 42W / 45W / 47W
 Power Factor: ≥0.9
 Beam angle: 120°
 CCT: 3000K 4000K 5000K 5700K

Lifespan: 40000hrs
 CRI: ≥80
 IP: 20
 Dimmable: No
 Diffuser: Opal

Model	Non-DIM Lumen (±5%)			
	3000K	4000K	5000K	5700K
UP-DB08-600-20W	1920	2060	2000	1940
UP-DB08-1200-40W	3760	3960	3880	3800
UP-DB08-1200-40W-E	3760	3960	3880	3800
UP-DB08-1200-42W-S	3760	3960	3880	3800
UP-DB08-1500-45W	4460	4860	4590	4500
UP-DB08-1500-45W-E	4460	4860	4590	4500
UP-DB08-1500-47W-S	4460	4860	4590	4500

LED Batten

600mm / 1200mm / 1500mm



Technical Specifications

Voltage: AC100-277V
 Power: 12W / 25W
 Power Factor: ≥0.9
 Beam angle: 120°
 CCT: 3000K 4000K 5000K 5700K

Lifespan: 40000hrs
 CRI: ≥80
 IP: 54
 Dimmable: No
 Diffuser: Opal

Model	Non-DIM Lumen (±5%)			
	3000K	4000K	5000K	5700K
UP-DB09-600-12W	1200	1260	1240	1220
UP-DB09-1200-25W	2500	2620	2580	2550

Complete PC Tube Light

600mm / 900mm / 1200mm



Technical Specifications

Voltage: AC100-240V
 Power: 10W / 12W / 18W
 Power Factor: ≥0.9
 Beam angle: 120°
 CCT: 3000K 4000K 5000K 5700K

Lifespan: 40000hrs
 CRI: ≥80
 IP: 20
 Dimmable: No
 Diffuser: Opal

Model	Non-DIM Lumen (±5%)			
	3000K	4000K	5000K	5700K
UP-T810W600	900	940	960	980
UP-T812W900	1100	1200	1250	1340
UP-T818W1200	1650	1750	1790	1830

Glass Tube

600mm / 900W / 1200W / 1500W



Technical Specifications

Voltage: AC100-240V
 Power: 9W / 12W / 18W / 24W
 Power Factor: ≥0.9
 Beam angle: 180°
 CCT: 3000K 4000K 5000K 5700K

Lifespan: 40000hrs
 CRI: ≥80
 IP: 20
 Dimmable: No
 Diffuser: Opal

Model	Non-DIM Lumen (±5%)			
	3000K	4000K	5000K	5700K
UP-T89W600	800	850	870	880
UP-T812W900	1050	1150	1180	1200
UP-T818W1200	1600	1720	1750	1770
UP-T824W1500	2150	2280	2330	2350

