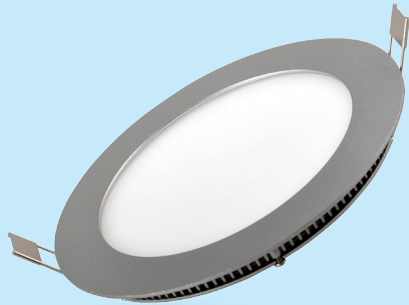




Technical Application Guide for UP-SHINE LED Panel Light

UP-PL3019-20W

Introduction



Super Slim round panel provided in full diameter, adopting SMD led chip. External driver comes with triac dim, it shares great popularity by perfect dimming range and great compatibility with worldwide dimmers. The ultra slim profile fits perfectly for all working places.

- Up to 80% energy saving compared to standard CFL
- Long lifetime of 40,000 hours
- Triac dim
- 120° wide beam angle
- 285mm cutout
- CCT: 3000K 4000K
5000K 5700K
- No UV/IR light
- Environment friendly, without Mercury or any other hazardous substances

Application notes

- IP40 for indoor use only
- Professional electrician for installation only
- Switch off before installation
- Do not touch when in use
- Keep away from hot steam and corrosive gas

Application Areas

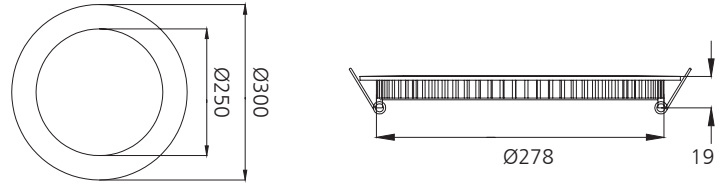
Widely used for various commercial lighting and residential lighting applications, such as offices, shopping mall, hotel, restaurant, hospital, home lighting etc.

Certificates

CE RoHS



Product Information



Technical Specifications

Model	Voltage	Power	Power Factor	Lumen (±5%)	Beam angle	CCT	Lifespan	CRI	Dimmable	Dimension
UP-PL3019-20W	AC230V	20W	≥0.9	1380	120°	3000K	40000h	≥80	No	Ø300*19mm cutout Ø285mm
UP-PL3019-20W	AC230V	20W	≥0.9	1450	120°	4000K	40000h	≥80	No	Ø300*19mm cutout Ø285mm
UP-PL3019-20W	AC230V	20W	≥0.9	1480	120°	5000K	40000h	≥80	No	Ø300*19mm cutout Ø285mm
UP-PL3019-20W	AC230V	20W	≥0.9	1520	120°	5700K	40000h	≥80	No	Ø300*19mm cutout Ø285mm
UP-PL3019-20W-D	AC230V	20W	≥0.9	1280	120°	3000K	40000h	≥80	Yes	Ø300*19mm cutout Ø285mm
UP-PL3019-20W-D	AC230V	20W	≥0.9	1350	120°	4000K	40000h	≥80	Yes	Ø300*19mm cutout Ø285mm
UP-PL3019-20W-D	AC230V	20W	≥0.9	1380	120°	5000K	40000h	≥80	Yes	Ø300*19mm cutout Ø285mm
UP-PL3019-20W-D	AC230V	20W	≥0.9	1420	120°	5700K	40000h	≥80	Yes	Ø300*19mm cutout Ø285mm

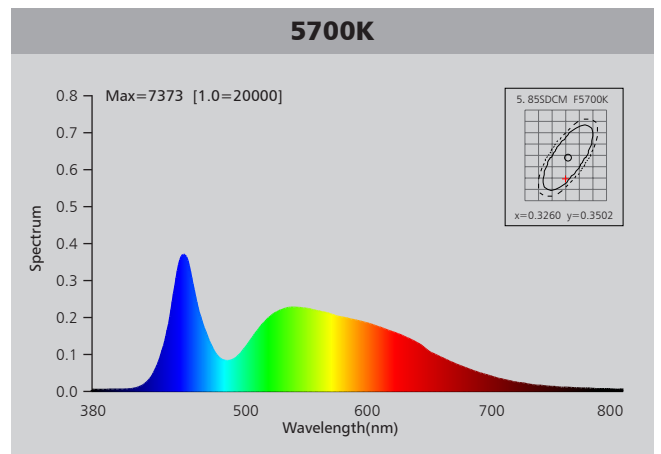
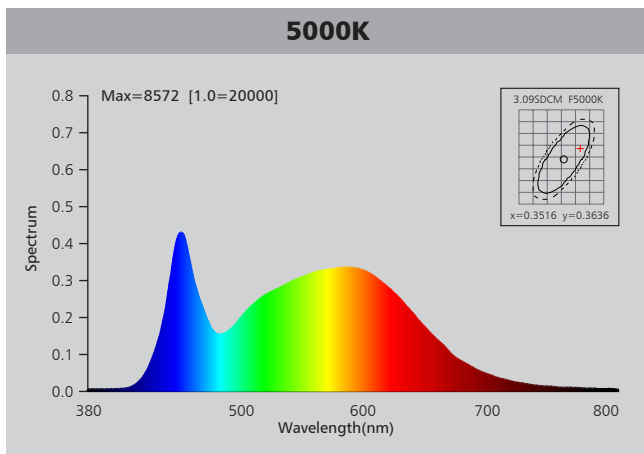
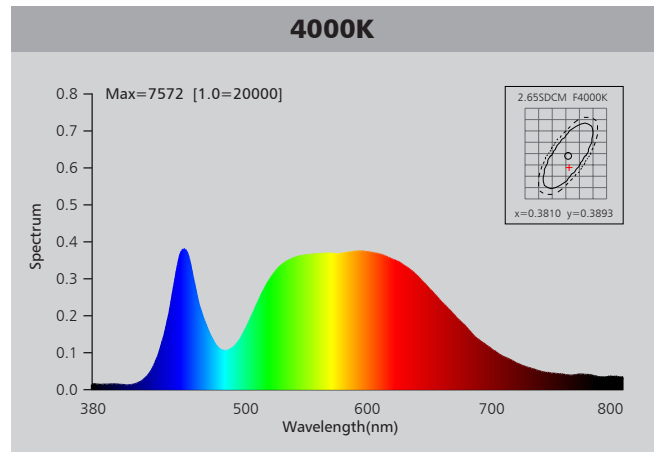
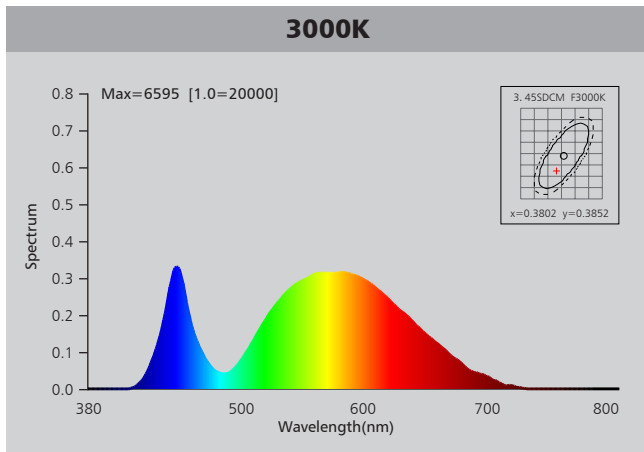
Driver data Sheet

Driver data	DIM	Non-dim
Input rated Voltage	AC230V	AC230V
Frequency	50Hz	50Hz
Input Voltage	AC200-240V	AC200-240V
Efficiency	≥75%	≥85%
Total load Wattage	20W±5%	20W±5%
Power Factor	≥0.9	≥0.9
Rated input current	≤0.12A	≤0.12A
Full load output Voltage	DC29-33V	DC29-33V
Rated output current	500mA	550mA
Output current range	500mA±5%	550mA±5%
Power tolerance	±5%	±5%
Current output tolerance	±5%	±5%
Dimming range	8%-100%	—
Dimmer	Triac dimmers	—
Short circuit protection	PASS	PASS
Over voltage protection	PASS	PASS
Over temperature protection	PASS	PASS
Withstand voltage	AC3750V	AC3750V

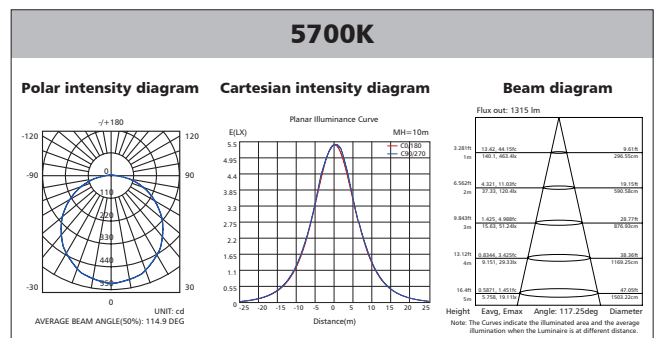
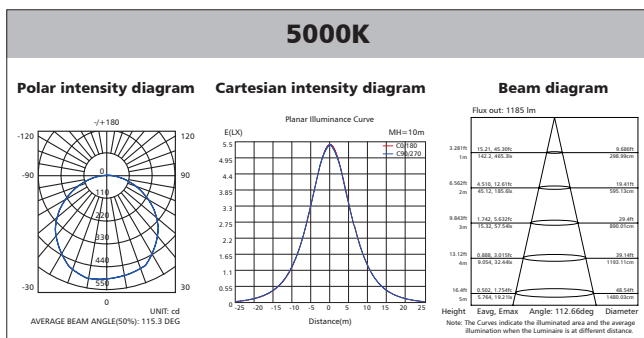
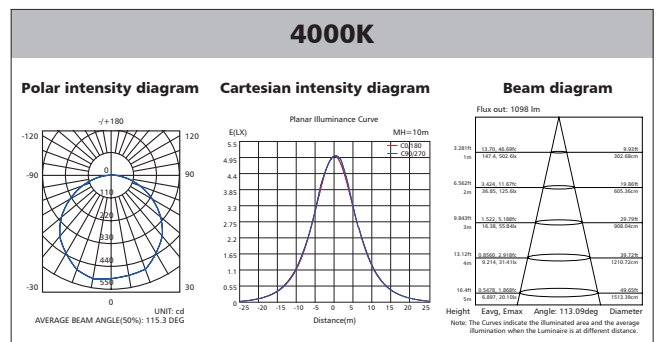
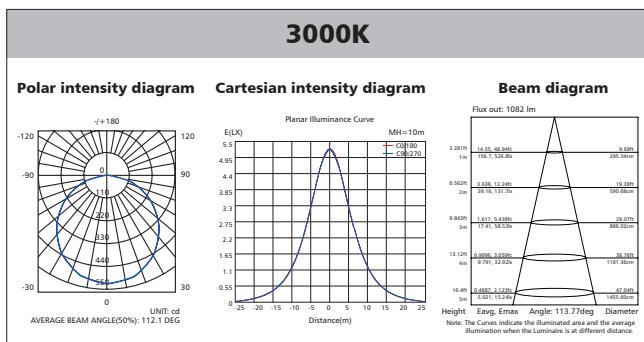
Fixture Compatibility

Rated Wattage	Electrical Classification	Ingress Protection	Operating Temp	Operating Humidity	Storage Temp
20W	II	IP40	-20°C~45°C	0~90%	-20°C~65°C

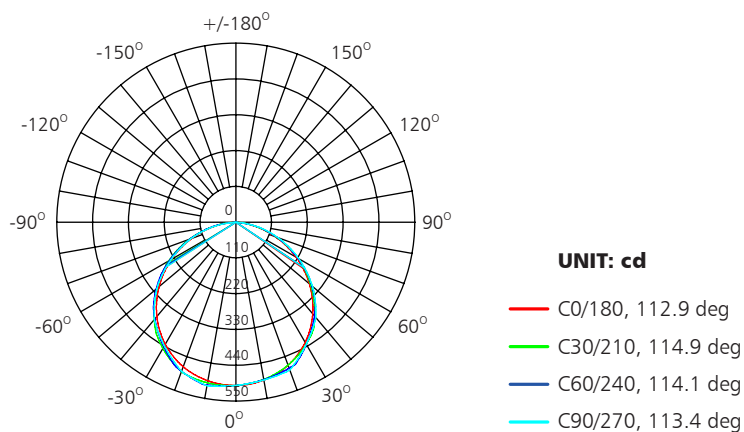
Spectral Distribution



Photometric Diagram



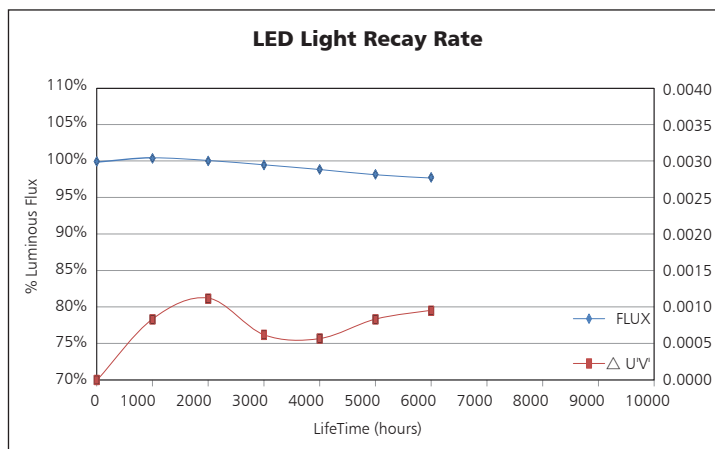
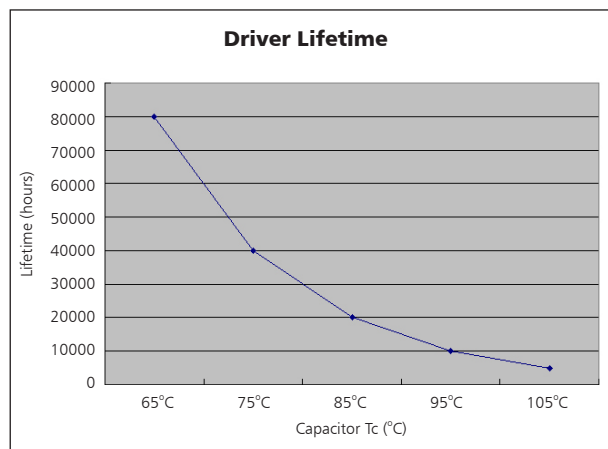
Polar Diagram Comparison



AVERAGE BEAM ANGLE (50%): 115.4DEG

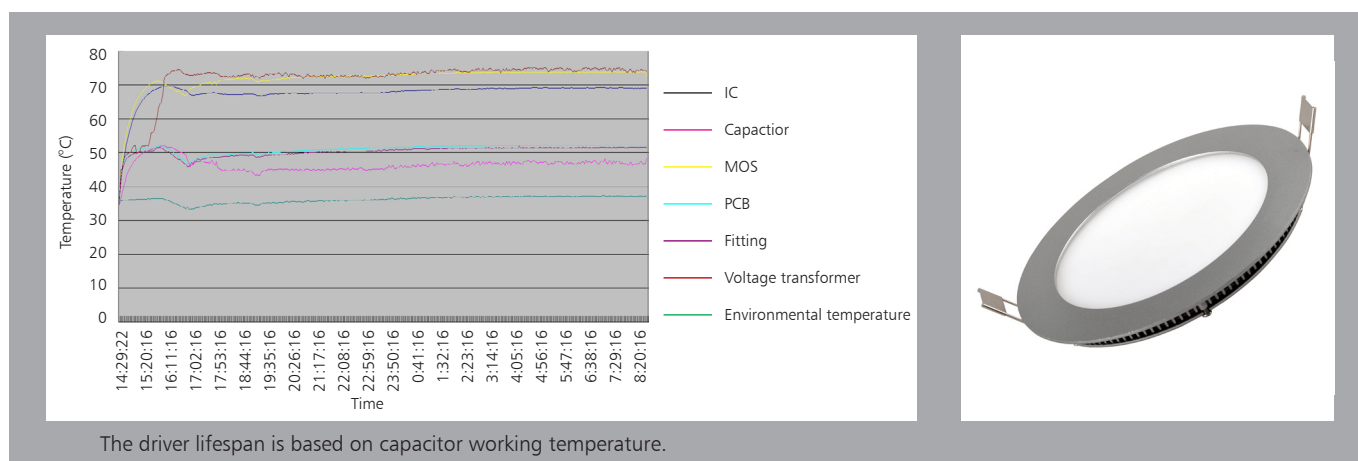


Driver lifetime & LED light decay rate



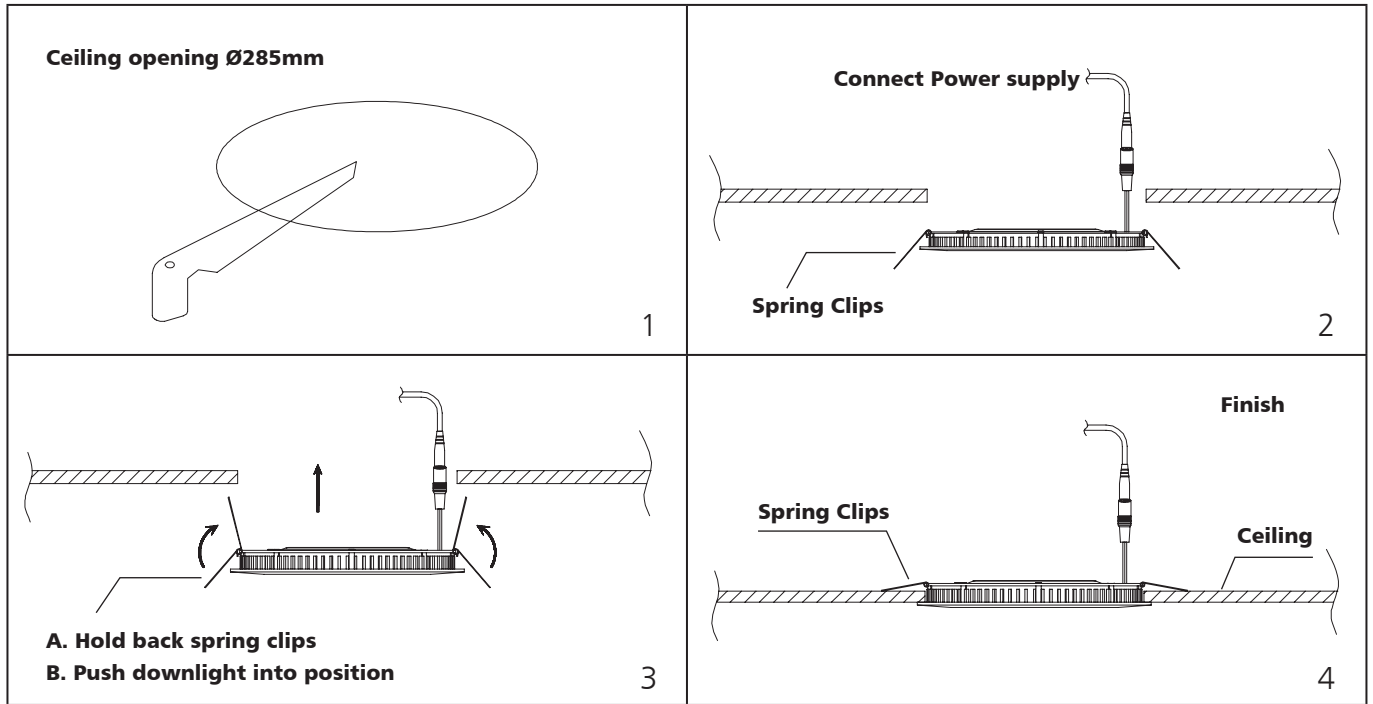
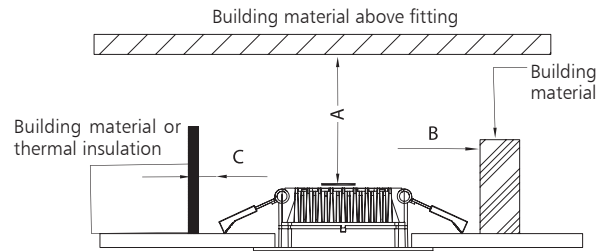
Temperature

- The testing is operated at 25°C
- The lifetime of capacitor, minimum of 5,000 hours if operated at 105°C, will be doubled whenever the temperature drops 10°C
- The highest withstand temperature of IC, MOS could be 120°C
- The highest withstand temperature of LED junction temperature is 150°C



Installation

Install requirements	
A-gap above the fitting	25mm
B-gap to the building material	25mm
C-gap to the thermal insulation	25mm



Packaging Information

	SIZE(CM)	N.W/pc (KGS)	G.W.(KGS)	Q'TY(PCS)
Carton	52.5*42*34.5	0.86	10.5	10

	CTNS	Q'TY(PCS)	VOLUME(CBM)
20" standard container	360	3600	28
40" standard container	720	7200	56

