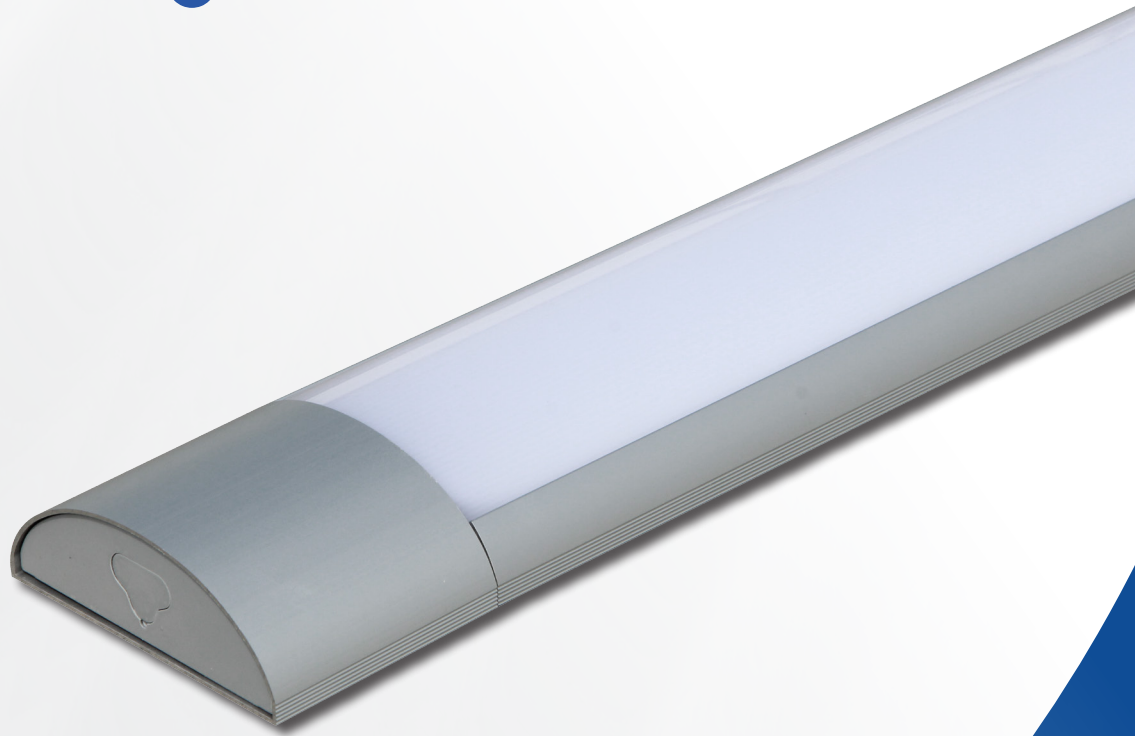
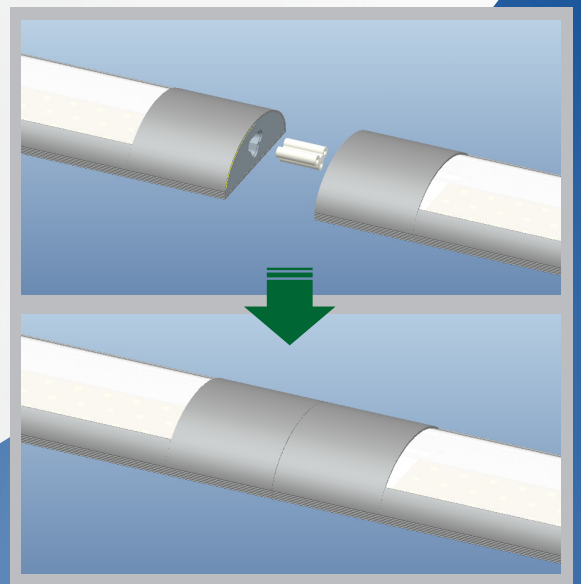




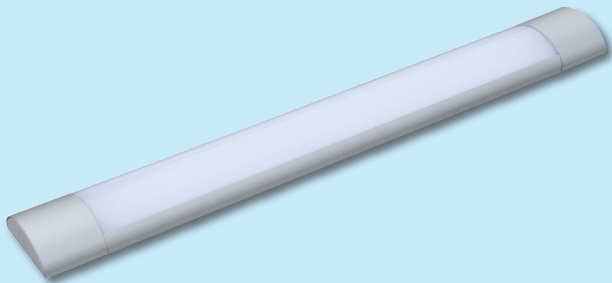
UPSHINE[®]



Technical Application
Guide for UP-SHINE
LED Batten
UP-DB01-21W



Introduction



Compared with Up-shine regular batten, DB01 is a new design with zero distance & seamless connection installation. Stretching Aluminum is employed both on lamp housing and end caps, aims at maintaining color consistency of surface treatment during production. It is impressive in texture and workmanship.

As an easy replacement of traditional grille and tube, batten makes itself outstanding with fast installation and easy connection between each unit, maximally reduce electrician cost.

- Up to 70% energy saving compared to standard CFL
- Long lifetime of 40,000 hours
- 110° wide beam angle
- CCT: 3000K 4000K
5000K 5700K
- No UV/IR light
- Environment friendly, without Mercury or any other hazardous substances

Application notes

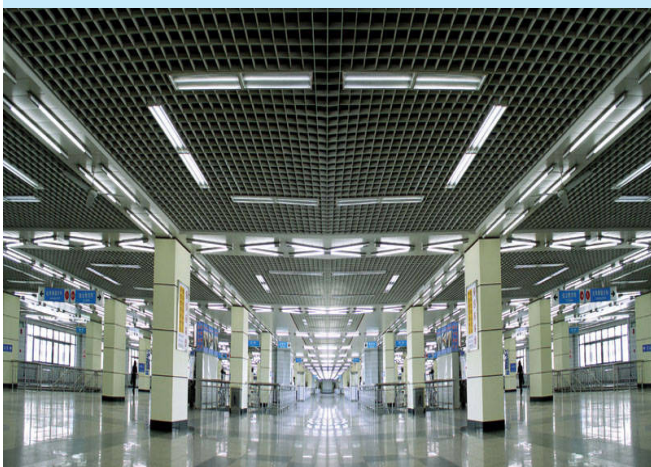
- IP20 for indoor use only
- Professional electrician for installation only
- Switch off before installation
- Do not touch when in use
- Keep away from hot steam and corrosive gas

Application Areas

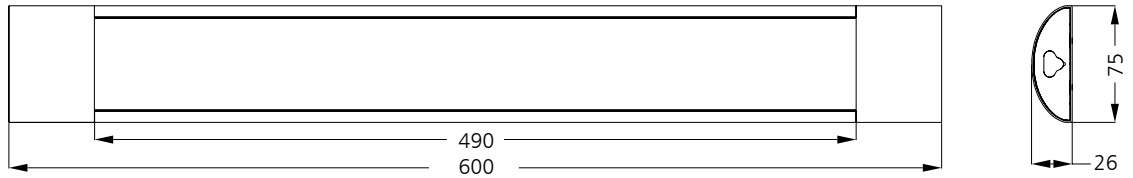
it is suitable for commercial and industrial use, such as super market, garage, office building, workshop etc.

Certificate

RoHS



Product Information



Technical Specifications

Model	Voltage	Power	Power Factor	Lumen (±5%)	Beam angle	CCT	Lifespan	CRI	Dimmable	Dimension
UP-DB01-21W	AC100-277V	21W	≥0.9	1830	110°	3000K	40000h	≥80	No	600*75*26mm
UP-DB01-21W	AC100-277V	21W	≥0.9	1870	110°	4000K	40000h	≥80	No	600*75*26mm
UP-DB01-21W	AC100-277V	21W	≥0.9	1850	110°	5000K	40000h	≥80	No	600*75*26mm
UP-DB01-21W	AC100-277V	21W	≥0.9	1790	110°	5700K	40000h	≥80	No	600*75*26mm

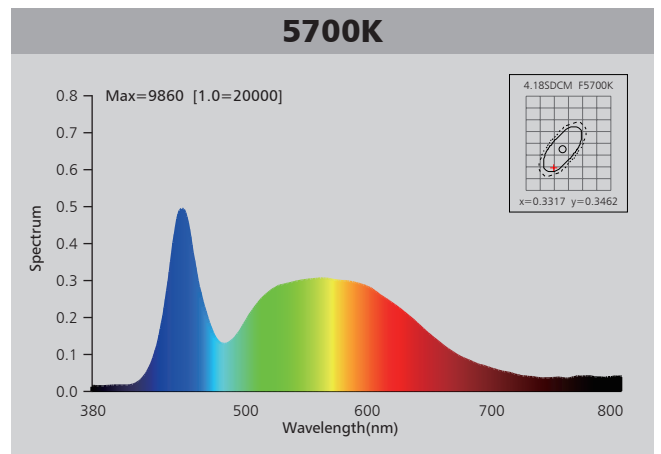
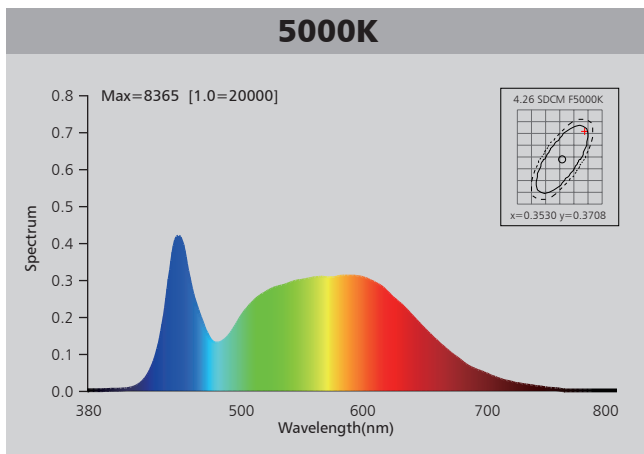
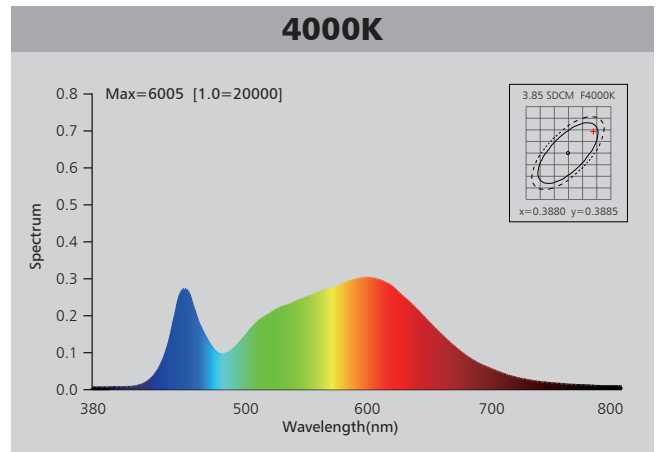
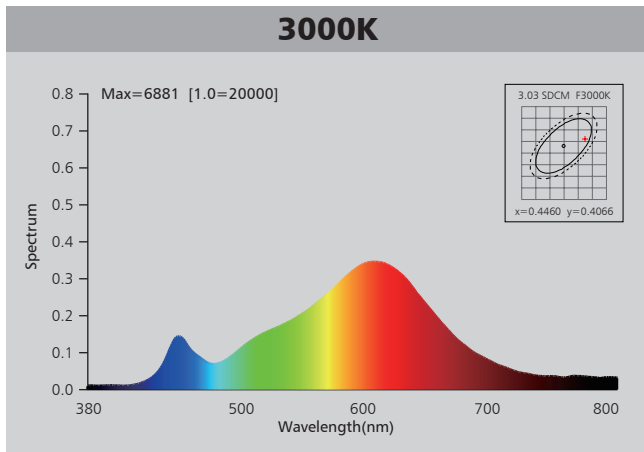
Driver data Sheet

Driver data	Non-dim
Input rated Voltage	AC100-277V
Frequency	50/60Hz
Input Voltage	AC90-305V
Efficiency	≥90%
Total load Wattage	21W±5%
Power Factor	≥0.9
Rated input current	≤0.24A
Full load output Voltage	DC60-72V
Rated output current	280mA
Output current range	280mA±5%
Power tolerance	±5%
Current output tolerance	±5%
Short circuit protection	PASS
Over voltage protection	PASS
Over temperature protection	PASS
THD	≤30%
Withstand voltage	AC1500V

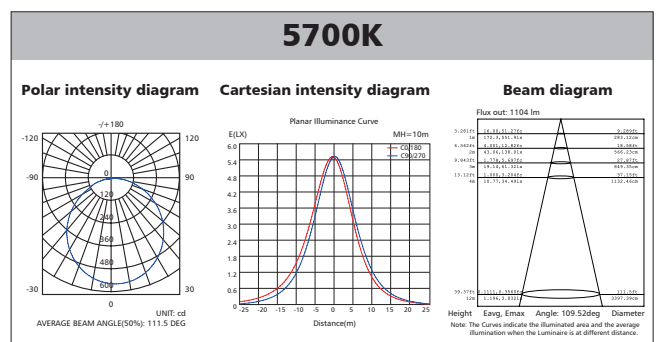
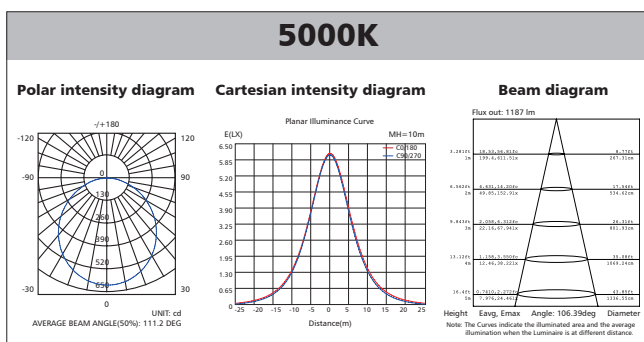
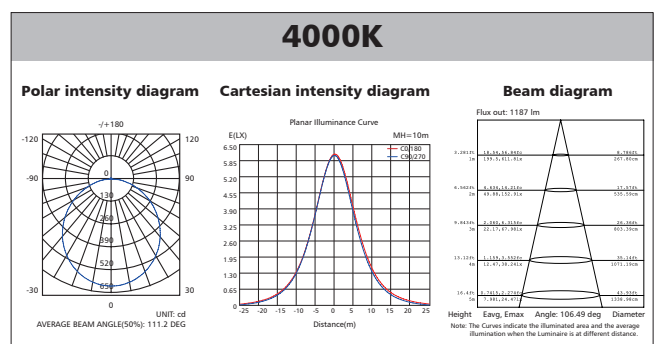
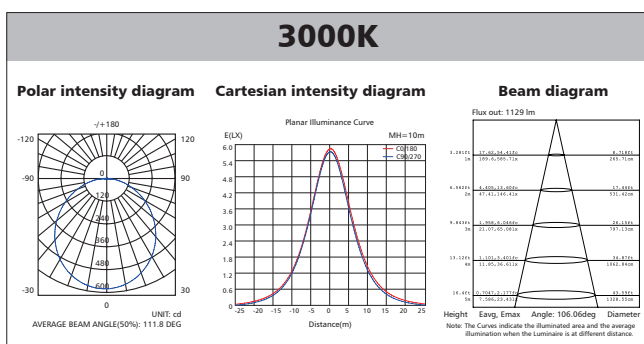
Fixture Compatibility

Rated Wattage	Electrical Classification	Ingress Protection	Operating Temp	Operating Humidity	Storage Temp
21W	I	IP20	-20°C~45°C	0~90%	-20°C~65°C

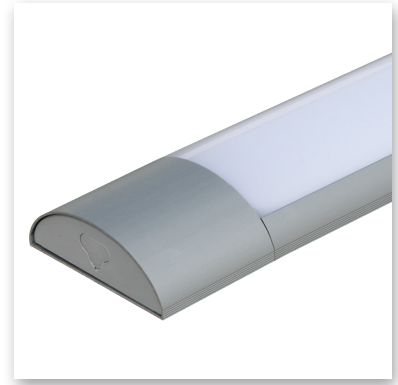
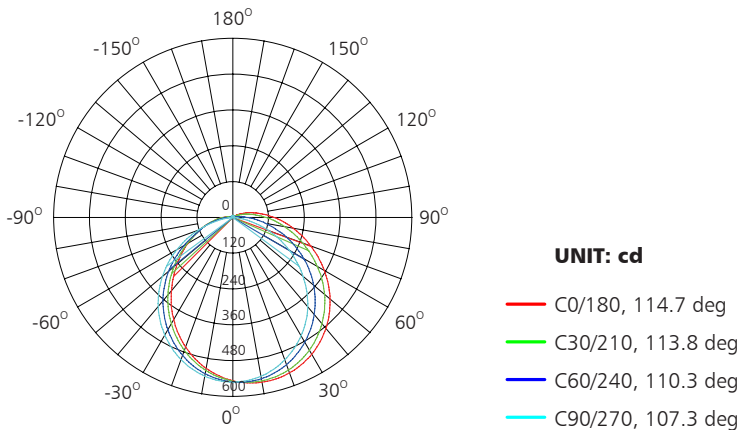
Spectral Distribution



Photometric Diagram

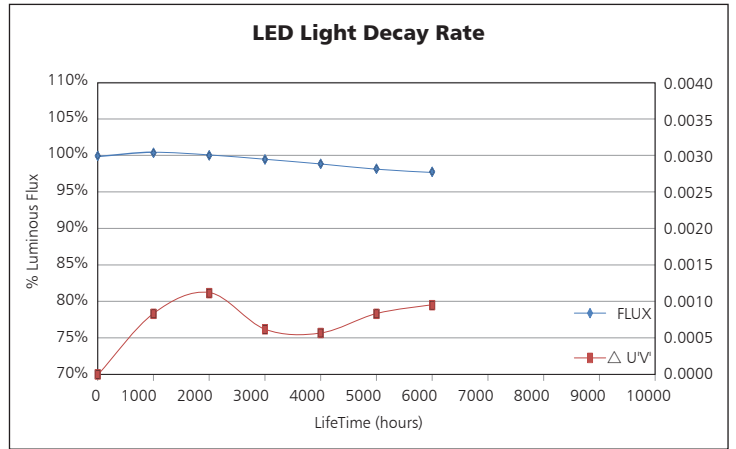
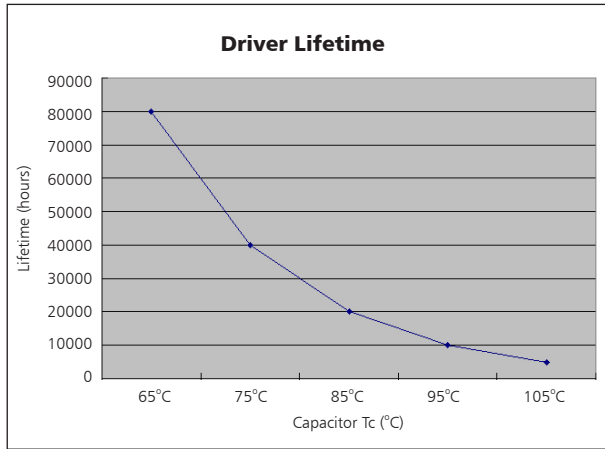


Polar Diagram Comparison



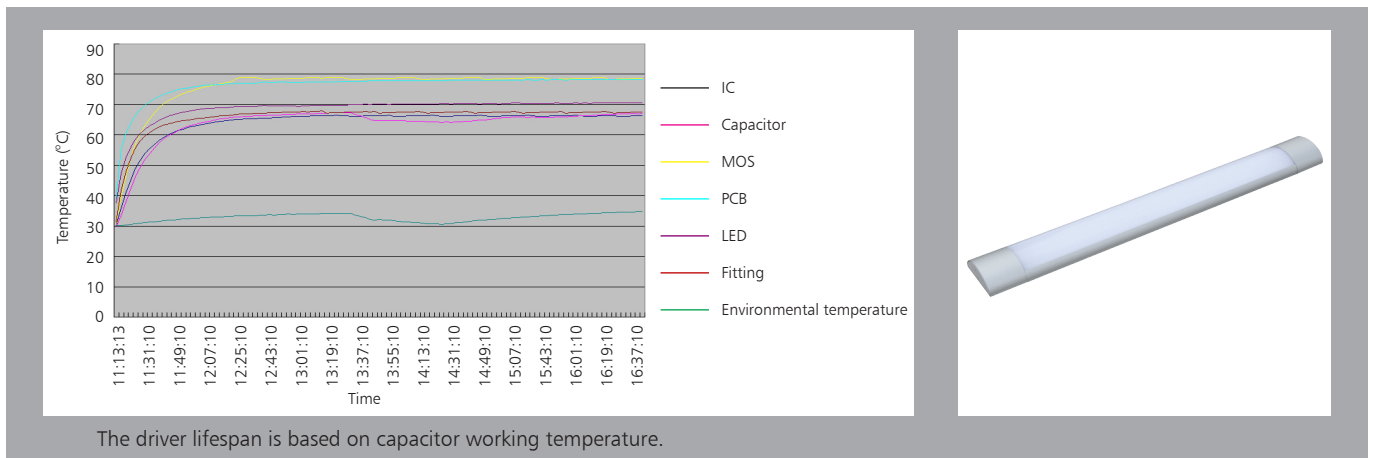
AVERAGE BEAM ANGLE (50%): 111.5DEG

Driver lifetime & LED light decay rate



Temperature

- The testing is operated at 25°C
- The lifetime of capacitor, minimum of 5,000 hours if operated at 105°C, will be doubled whenever the temperature drops 10°C
- The highest withstand temperature of IC, MOS could be 120°C
- The highest withstand temperature of LED junction temperature is 150°C



Installation

Step 1. Knock-in the plastic anchor into ceiling

Step 2. Fastening the clips on the ceiling

Step 3. Connect the power supply and hang the fixture back to the clips

Step 4. Restore power supply, switch on and test for correct operation

L = SWITCHED
 EARTH
 N = NEUTRAL

1+1+1+1.....N ≤ 240W

Packaging Information

	SIZE(CM)	N.W/pc (KGS)	G.W.(KGS)	Q'TY(PCS)	CTNS	Q'TY(PCS)	VOLUME(CBM)	
Carton	65*46*22.5	0.41	12.5	25	20" standard container	410	10250	28
					40" standard container	820	20500	56

